

Finished Molding Stack Diagram

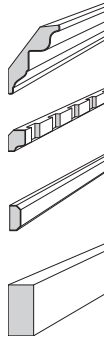
Read carefully before you begin.

This kit contains pre-packaged molding pieces that complement each other in a pre-designed molding stack. Professional installation strongly recommended.

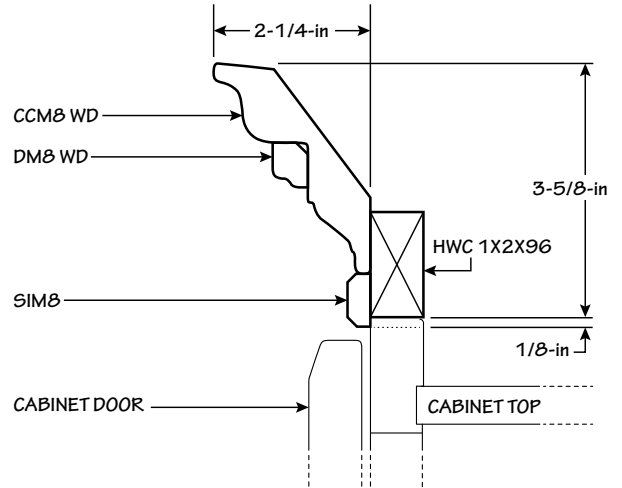
MS CCM8 100

Contents:

- (1-ct) CCM8 WD
- (1-ct) DM8 WD
- (1-ct) SIM8
- (1-ct) HWC 1X2X96
 - Unfinished



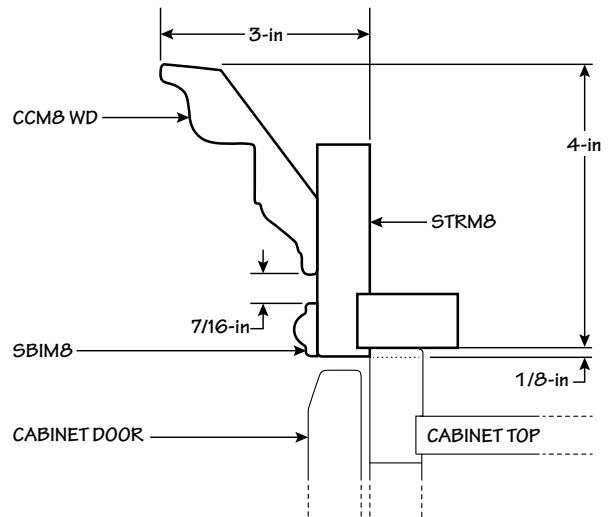
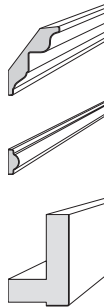
This molding stack can be installed at different heights. Reference Molding Stack Detail Drawing supplied by designer to confirm intended height.



MS CCM8 200

Contents:

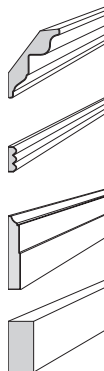
- (1-ct) CCM8 WD
- (1-ct) SBIM8
- (1-ct) STRM8



MS CCM8 300

Contents:

- (1-ct) CCM8 WD
- (1-ct) TBIM8
- (1-ct) CLBM8
- (1-ct) HWC 1X2X96
 - Unfinished



This molding stack can be installed at different heights. Reference Molding Stack Detail Drawing supplied by designer to confirm intended height.

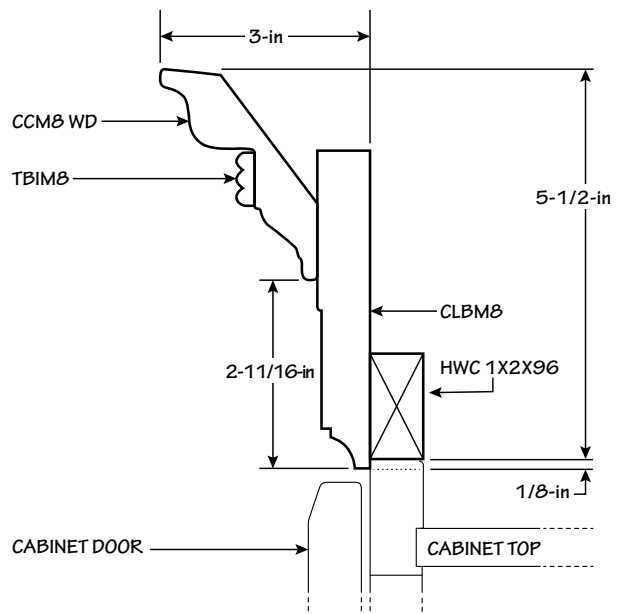


Diagrama de Conjunto de Molduras de Acabado

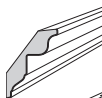
Lea las instrucciones detenidamente antes de comenzar.

Este kit contiene piezas de molduras previamente empacadas que se complementan unas con otras en un conjunto de molduras previamente diseñadas. Se recomienda encarecidamente una instalación hecha por profesionales.

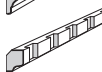
MS CCM8 100

Contenido:

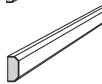
(1-ct) CCM8 WD



(1-ct) DM8 WD

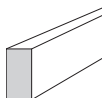


(1-ct) SIM8

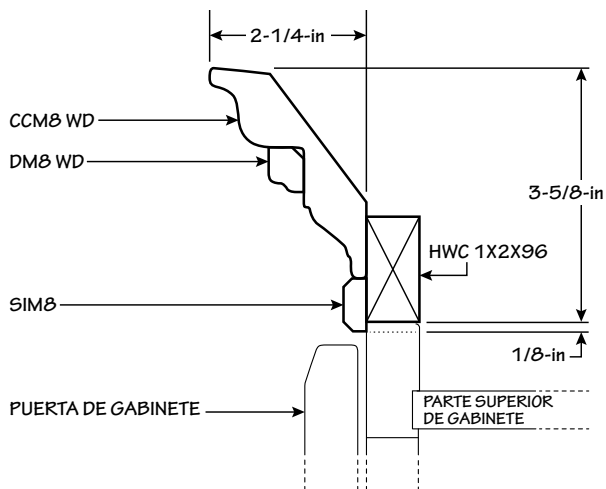


(1-ct) HWC 1X2X96

- Sin acabado



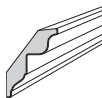
Este conjunto de molduras se puede instalar a diferentes alturas. Dibujo de referencia del conjunto de molduras provisto por el diseñador para confirmar la altura planeada.



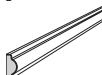
MS CCM8 200

Contenido:

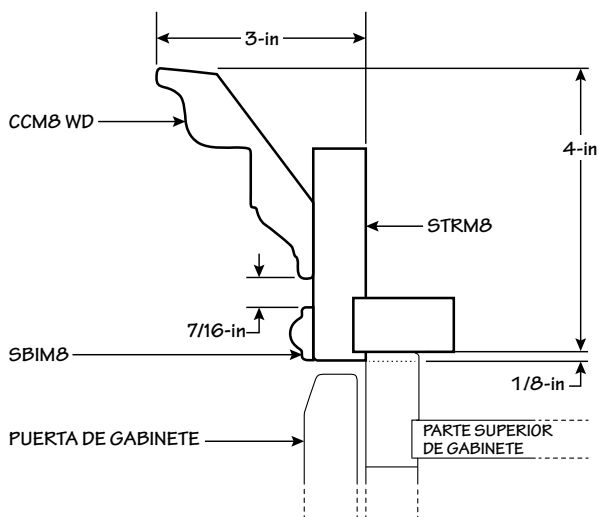
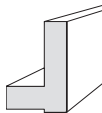
(1-ct) CCM8 WD



(1-ct) SBIM8



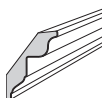
(1-ct) STRM8



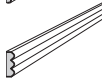
MS CCM8 300

Contenido:

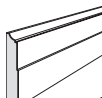
(1-ct) CCM8 WD



(1-ct) TBIM8

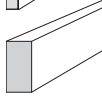


(1-ct) CLBM8



(1-ct) HWC 1X2X96

- Sin acabado



Este conjunto de molduras se puede instalar a diferentes alturas. Dibujo de referencia del conjunto de molduras provisto por el diseñador para confirmar la altura planeada.

