



Origins™

BY TIMBERLAKE



Reference Guide

SPRING 2026

Table of Contents

DOOR FINISHES

- 06 • Austin White
- 08 • Chatham White
- 10 • Chatham Pebble
- 12 • Chatham Oak Bourbon
- 14 • Chatham Oak Harvest
- 16 • Chatham Umber
- 18 • At a Glance

PRODUCT SPECIFICATIONS

- 22 • An Inside Look
- 24 • Cabinet Face Dimensions
- 26 • Wall Cabinets
- 27 • Base Cabinets
- 28 • Tall Cabinets
- 29 • Vanity Cabinets
- 29 • Accessory Items
- 32 • Molding
- 33 • Hardware
- 34 • Functional Kitchen Additions
- 36 • Important Information



CHATHAM OAK BOURBON



YOUR TRUSTED PARTNER

Don't worry, we plan ahead. Designing to save money, scheduling to make every minute count, and installing for one-trip satisfaction.



INDUSTRY EXPERTS

When you team up with Timberlake, you benefit from years of experience and refinement, meaning high-quality materials, craftsmanship, and service.



QUALITY MEETS VALUE

With on-trend aesthetics and a low price point, we make it easy to choose the right cabinets for any project.

Door Finishes

Choose Austin, our new standard overlay door, in White or our full-overlay Chatham door in Umber, Oak Harvest, Oak Bourbon, Pebble, or White.



AUSTIN WHITE



White

AUSTIN DOOR STYLE

These builder-friendly, Shaker-style cabinets feature a standard overlay design with a clean, refreshing white finish.

Features

CONSTRUCTION

Routed MDF
Recessed panel

DOOR DETAILS

Standard overlay

FINISH

Thermofoil

HARDWARE

Optional



AUSTIN WHITE



White

CHATHAM DOOR STYLE

White, Shaker-style cabinets are timeless, providing a clean, fresh backdrop for everyday living.

Features

CONSTRUCTION

Routed MDF
Recessed panel

DOOR DETAILS

Full overlay

FINISH

Thermofoil

HARDWARE

Required



CHATHAM WHITE



Pebble

CHATHAM DOOR STYLE

The soft gray Thermofoil finish of Pebble adds comfort and warmth to any room.

Features

CONSTRUCTION

Routed MDF
Recessed panel

DOOR DETAILS

Full overlay

FINISH

Thermofoil

HARDWARE

Required



CHATHAM PEBBLE



Oak Harvest

CHATHAM DOOR STYLE

The Harvest finish brings a light, sun-washed warmth that highlights the oak's natural character. Easygoing and inviting, it feels right at home in any space, adding a touch of soft, buttery glow.

Features

CONSTRUCTION
Mortise & Tenon

DOOR DETAILS
Full overlay

FINISH
Stain

HARDWARE
Required



Oak Bourbon

CHATHAM DOOR STYLE

Leaning rich and full, with a deep warmth that brings out the oak's natural grain, Bourbon settles in effortlessly. Confident and inviting, it adds just a hint of indulgent character to any space.



Features

CONSTRUCTION
Mortise & Tenon

DOOR DETAILS
Full overlay

FINISH
Stain

HARDWARE
Required



CHATHAM OAK BOURBON



Umber

CHATHAM DOOR STYLE

Elevate any space with Umber, a rich, dark-stained wood grain that adds depth and drama.

Features

CONSTRUCTION
Mortise & Tenon

DOOR DETAILS
Full overlay

FINISH
Stain

HARDWARE
Required



CHATHAM UMBER



At a Glance

CARE AND CLEANING

Our laminate, staining, and wood finishing processes are designed to ensure long-lasting durability. However, proper care is essential to maintain the original factory finish.

- Wipe up spills immediately to prevent damage.
- Use only mild soaps for cleaning.
- Always review the cabinet care guidelines and cleaning product instructions thoroughly.

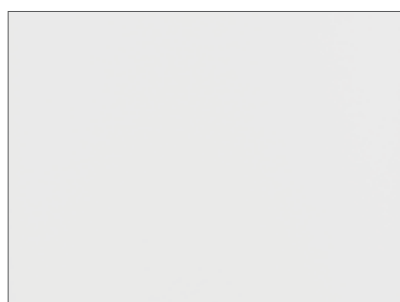


MATERIAL OPTIONS



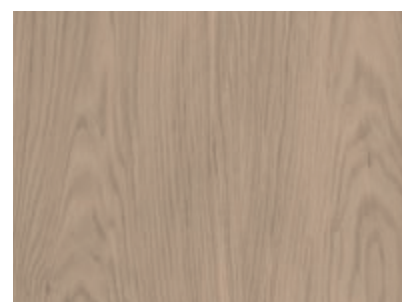
Hardwood

Hardwood cabinetry has a dense structure and comes from a combination of deciduous trees such as maple, beech, birch, or poplar. Natural colors range from light blonde to dark reddish-brown tones. These hardwoods may contain mineral streaks, slight differences in graining, and color variations.



Thermofoil

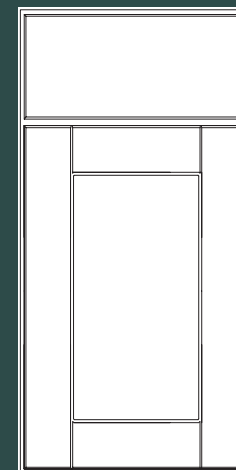
Thermofoil is a process that involves permanently bonding a thick vinyl film to a warp-resistant engineered wood core. The film's consistent color throughout enhances durability, making the surface easy to clean and highly resistant to chipping and cracking.



Oak

Oak cabinetry is crafted from a strong, durable hardwood known for its distinctive grain pattern and timeless appeal. Natural tones range from light honey and warm golden hues to deeper, rich brown shades. Oak may feature prominent grain movement, subtle color variation, and occasional mineral streaks, all of which enhance its natural character and beauty.

CHATHAM FINISHES

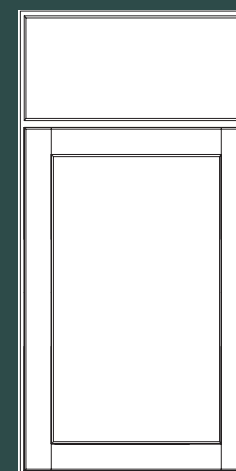


Door: Recessed Panel
 Overlay: Full Overlay
 Construction: Routed MDF
 Hardware: Required



WHITE THERMOFOIL 1SSW

PEBBLE THERMOFOIL 1SDV



Door: Recessed Panel
 Overlay: Full Overlay
 Construction: Hardwood Mortise & Tenon
 Hardware: Required

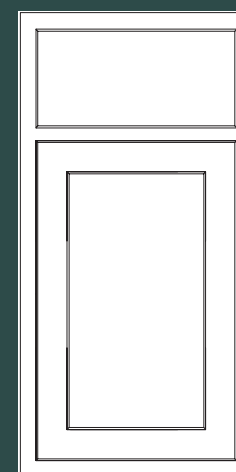


UMBER STAIN 1SJM

OAK HARVEST 1SLO

OAK BOURBON 1SSB

AUSTIN FINISHES



Door: Recessed Panel
 Overlay: Standard Overlay
 Construction: Routed MDF
 Hardware: Optional



WHITE THERMOFOIL 2SPW



Product Specs

Design a kitchen that fits any lifestyle. With quality construction and features at budget-friendly prices, you'll get the most value and years of satisfaction.



AUSTIN WHITE



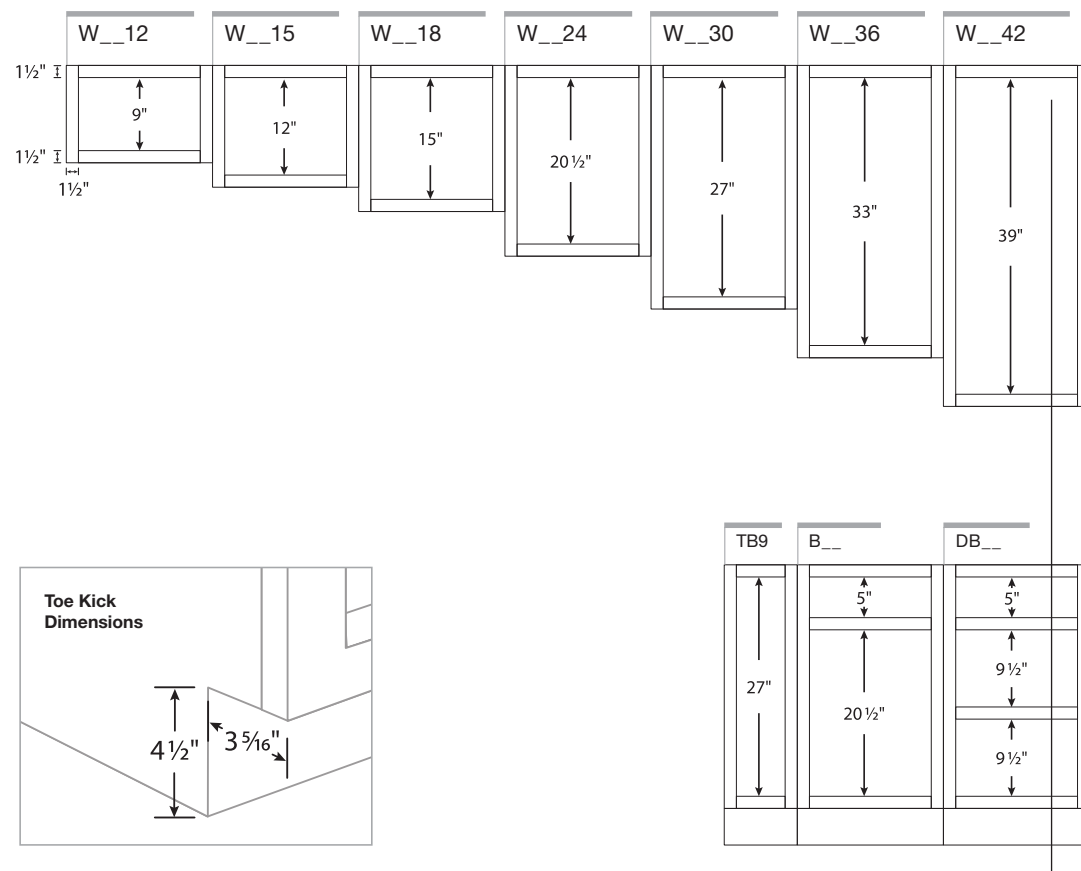
An Inside Look

All cabinetry manufactured by Timberlake is certified by the Kitchen Cabinet Manufacturers Association (KCMA). Timberlake has received certification by KCMA Environmental Stewardship Program on all products.

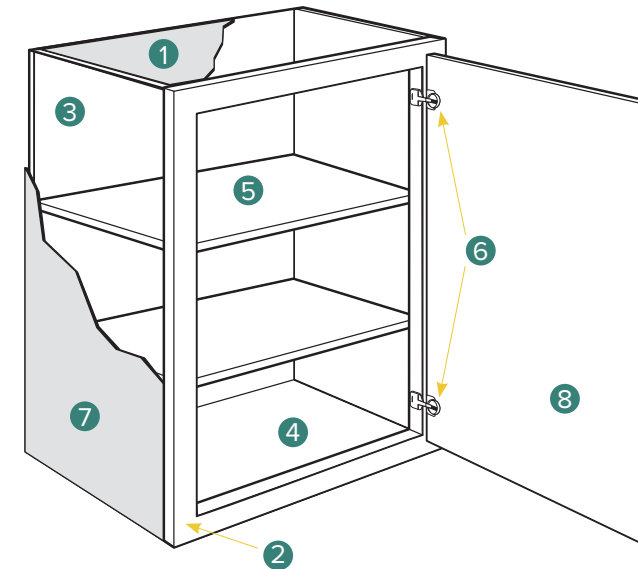


CABINET OPENING DIMENSIONS

Illustrations specify dimensions of vertical stiles and horizontal rails, inset toe kick, and standard interior opening heights. When selecting cabinetry for installation above or near any appliance, refer to the appliance manufacturer's specification for clearance and venting requirements.

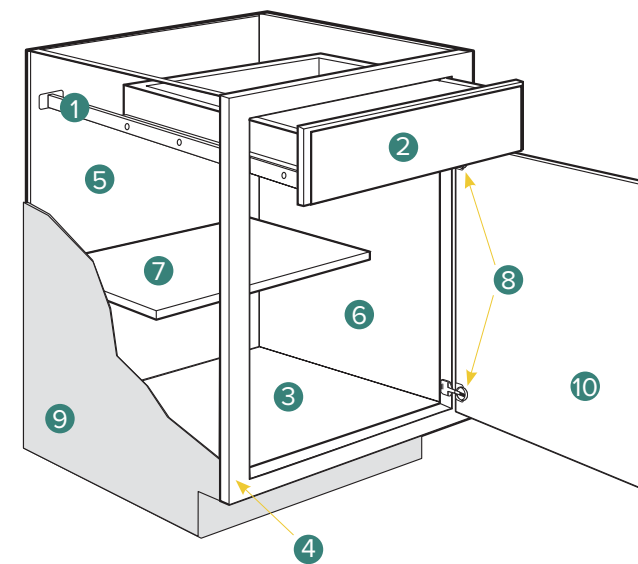


WALL CABINETS



- 1 Top/Bottom Panels:** 3/8" engineered wood
- 2 Face Frame:** 1 1/2" wide frame material
- 3 Back Panel:** Full 3/8" back panel
- 4 Interiors:** Natural wood-grain laminate finish on engineered wood
- 5 Shelves:** 3/4" thick adjustable shelves
- 6 Hinges:** Fully concealed and adjustable
- 7 End Panels:** 1/2" engineered wood with laminated exterior to match cabinet finish
- 8 Door:** Reversible door on single-door cabinets for left or right opening; hinged on the left from the factory; double-door cabinets are butt doors with no center stile (excluding 39" wide cabinets)

BASE CABINETS



- 1 Drawer Glides:** 3/4" access ball bearing
- 2 Drawer Box:** Hardwood, 4-sided drawer box with fully encapsulated bottom
- 3 Bottom Panels:** 3/8" engineered wood
- 4 Face Frame:** 1 1/2" wide frame material
- 5 Back Panel:** Full 3/8" back panel with a natural laminate interior
- 6 Interiors:** Natural wood-grain laminate finish on engineered wood
- 7 Shelf:** 3/4" thick adjustable half-depth shelf
- 8 Hinges:** Fully concealed and adjustable
- 9 End Panels:** 1/2" engineered wood with laminated exterior to match cabinet finish
- 10 Door:** Reversible door on single-door cabinets for left or right opening; hinged on the left from the factory; double-door cabinets are butt doors with no center stile (excluding 39" wide cabinets)

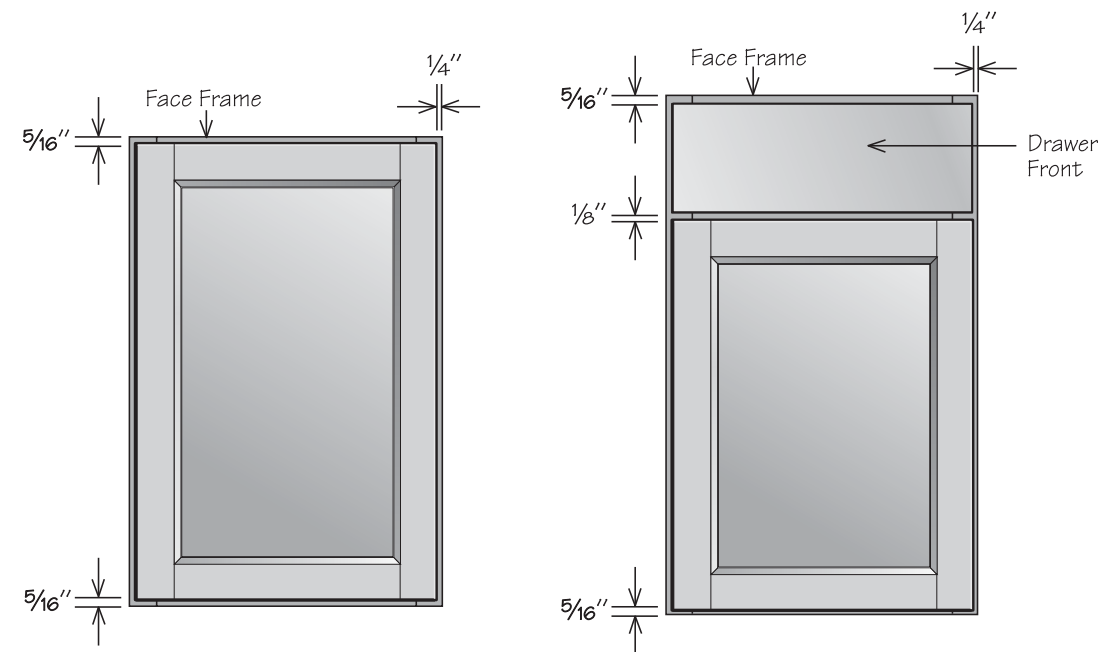
Cabinet Face Dimensions

Choose full overlay doors for a seamless, modern look or standard overlay doors to reveal a portion of the cabinet frame for a more traditional style.



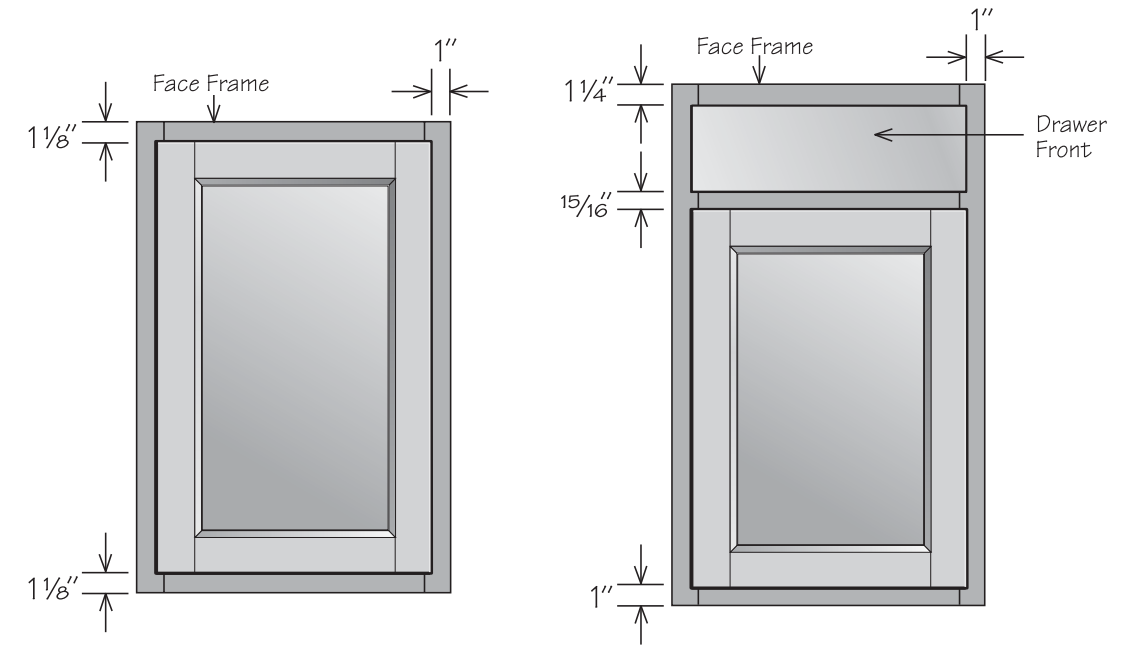
FULL OVERLAY

Full overlay doors are designed to cover the majority of the cabinet face frame, offering a sleek and modern appearance. To ensure smooth operation, it's important to include at least a 1-inch filler between the hinged side of full overlay doors and any adjacent objects, such as cabinets, walls, appliances, or countertops. This spacing prevents interference and allows the doors to open freely, requiring decorative hardware for use.

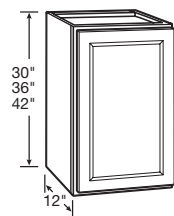


STANDARD OVERLAY

Standard Overlay (SOL) doors are sized to show about an inch of the cabinet face frame, giving the doors some visual depth. Cabinets 39" wide will feature a center stile, creating a 2" gap between doors. Standard Overlay door styles do not require decorative hardware.



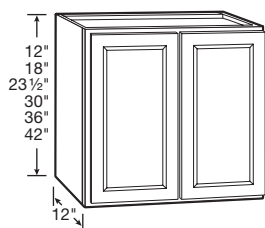
WALL CABINET | 1 DOOR



- Includes two adjustable shelves
- Hinged left, field reversible

30" HIGH	36" HIGH	42" HIGH
W1230	W1236	W1242
W1530	W1536	W1542
W1830	W1836	W1842
W2130	W2136	W2142
W2430	W2436	W2442

WALL CABINET | 2 BUTT DOORS



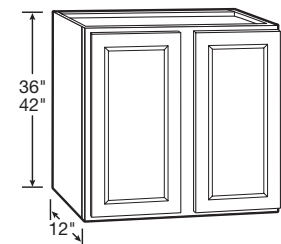
12" HIGH • NO SHELF	18" HIGH • NO SHELF
W3012 BUTT	W3018 BUTT
W3612 BUTT	W3618 BUTT

24" HIGH • 1 SHELF	30" HIGH • 2 SHELVES
W3024 BUTT	W2730 BUTT
W3624 BUTT	W3030 BUTT
	W3330 BUTT
	W3630 BUTT

36" HIGH • 2 SHELVES	42" HIGH • 2 SHELVES
W2736 BUTT	W2742 BUTT
W3036 BUTT	W3042 BUTT
W3336 BUTT	W3342 BUTT
W3636 BUTT	W3642 BUTT

WALL CABINET | 2 DOORS

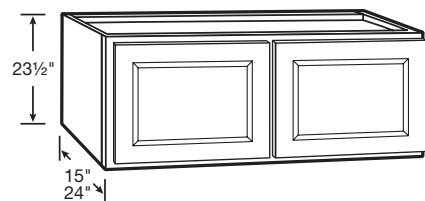
NEW! PRODUCT



36" HIGH • 2 SHELVES	42" HIGH • 2 SHELVES
W3936	W3942

REFRIGERATOR WALL CABINET | 2 BUTT DOORS

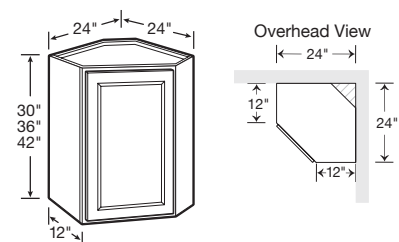
NEW! SIZE



- Includes one adjustable shelf

24" HIGH • 1 SHELF
24" Deep
W3624X24DP BUTT
15" Deep
W3024X15DP BUTT

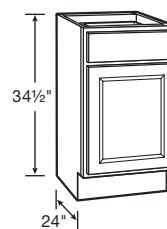
CORNER WALL CABINET



- Installs in a 24" x 24" wall area
- 30" high includes one adjustable shelf
- 36" high and 42" high include two adjustable shelves
- Hinged left, field reversible

30" HIGH	36" HIGH	42" HIGH
CW2430	CW2436	CW2442

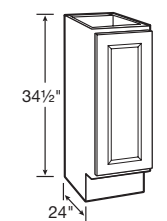
BASE | 1 DOOR AND 1 DRAWER



- Ball-bearing drawer glides
- One half-depth adjustable shelf included
- Hinged left, field reversible

34 1/2" HIGH	
B12	B21
B15	B24
B18	

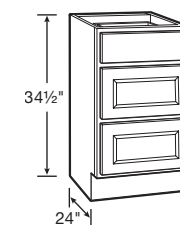
FULL-HEIGHT BASE CABINET | 1 DOOR



- One half-depth adjustable shelf included
- Hinged left, field reversible

34 1/2" HIGH
TB9

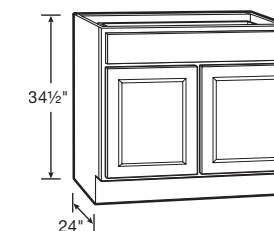
DRAWER BASE CABINET | 3 DRAWERS



- 18" wide and 24" wide include ball-bearing drawer glides
- 30" wide and 36" wide include full-extension, heavy-duty drawer glides on all three drawers
- Deep drawers feature five-piece drawer fronts

34 1/2" HIGH	
DB18	DB30
DB24	DB36 1TD

BASE | 2 BUTT DOORS AND 1 DRAWER

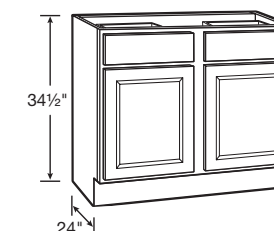


- Ball-bearing drawer glides
- One half-depth adjustable shelf included

34 1/2" HIGH
B27 BUTT
B30 BUTT
B33 BUTT
B36 1TD BUTT

BASE | 2 DOORS AND 2 DRAWERS

NEW! PRODUCT

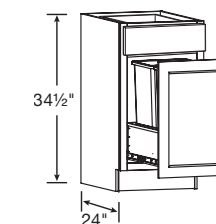


- Ball-bearing drawer glides
- One half-depth adjustable shelf included

34 1/2" HIGH
B39

BASE CABINET | 1 DOOR WITH WASTEBASKET PULL-OUT AND 1 DRAWER

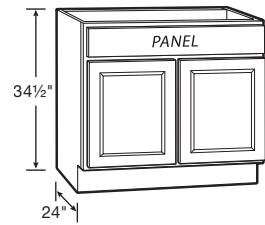
NEW! PRODUCT



- Top drawer includes ball-bearing drawer glides
- Wastebasket pullout includes heavy-duty ball-bearing drawer glides and two 35-quart capacity bins

34 1/2" HIGH
BWBB18-2

SINK/COOKTOP BASE | 2 BUTT DOORS AND 1 PANEL

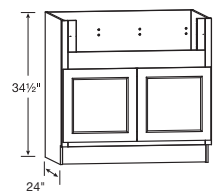


- Full-height back panel
- No shelf
- Subtract 1/2" from width and 1/8" from depth for available sink bowl opening
- Refer to sink/cooktop manufacturer's specifications for adequate clearance and required installation materials
- Touch-up kit included

34 1/2" HIGH
SB30 BUTT TU
SB36 BUTT TU

DEEP SINK BASE

NEW! PRODUCT

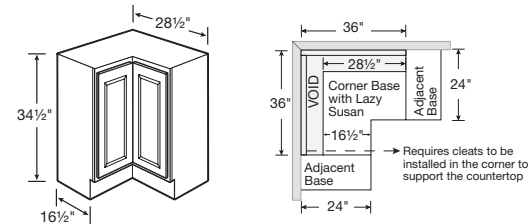


APRON CUTOUT DIMENSIONS			
ACTUAL WIDTH	MAX. WIDTH	ACTUAL HEIGHT	MAX. HEIGHT
29"	33"	7 1/2"	11"

- 2" stiles and 4" rail are trimmable to accommodate various size sinks/cooktops
- Smaller size sinks/cooktops can be accommodated with use of 3" or 6" filler
- No shelf

34 1/2" HIGH
DSB36 BUTT TU

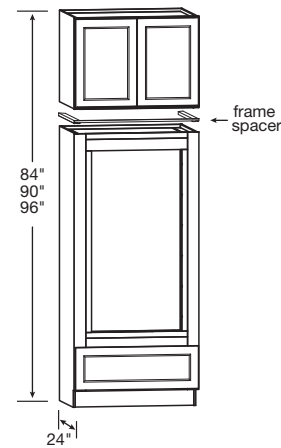
CORNER BASE CAROUSEL | SPIN UNIT



- Installs in a 36" x 36" wall area
- Two-piece overlay door hinged together in the middle
- Two 360° independently rotating metal racks
- Exterior side panels are natural laminate
- Hinged left, reversible in field
- Additional space recommended if appliance is installed on the hinged side of this cabinet for proper door operation
- If unit has an exposed side, order an end panel separately

34 1/2" HIGH
CAR36

DOUBLE OVEN CABINET | 2 BUTT DOORS AND 1 DRAWER

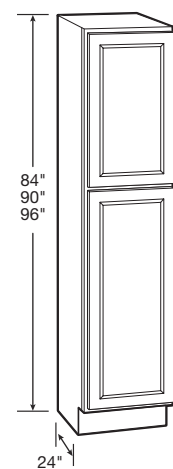


- Includes drawer with full-extension, heavy-duty drawer glides
- Includes 24" deep wall cabinet (ships separately)
- Overhead wall cabinet is not pre-installed to oven cabinet, comes as two pieces, boxed separately
- Rails and stiles around oven opening are trimmable
- Cut-out dimensions:
Width: 24" minimum, 30" maximum
Height: 47 5/8" minimum, 52 5/8" maximum
- Frame spacer included in OVD339624 BUTT only
- 96" high double oven overhead wall cabinet is 23 1/2" high

84" HIGH OVD338424 BUTT **90" HIGH** OVD339024 BUTT **96" HIGH** OVD339624 BUTT

PANTRY CABINET | 24" DEEP

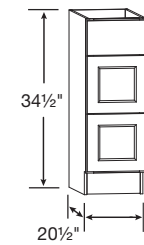
NEW! PRODUCT



- Upper door lines up with 30", 36" and 42" high wall cabinets
- 84" and 90" includes three full-depth adjustable shelves and one full-depth fixed shelf
- 96" includes four full-depth adjustable shelves and one full-depth fixed shelf
- 96" has removable toe kick that is field installed

84" HIGH UT1824X84 AS **90" HIGH** UT1824X90 AS **96" HIGH** UT1824X96 AS

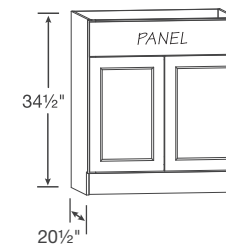
VANITY DRAWER BASE | 3 DRAWERS



- Deep drawers feature five-piece drawer fronts

34 1/2" HIGH
VDB1234H
VDB1534H
VDB1834H

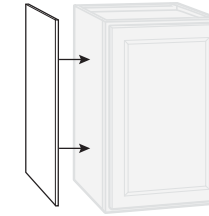
VANITY SINK BASE | 2 BUTT DOORS AND 1 DRAWER PANEL



- No shelf
- Subtract 1/2" from width and 1/8" from depth for available sink bowl opening
- Refer to sink manufacturer's specifications for adequate clearance and required installation materials

34 1/2" HIGH
VSB2434H BUTT VSB3334H BUTT
VSB2734H BUTT VSB3634H BUTT
VSB3034H BUTT

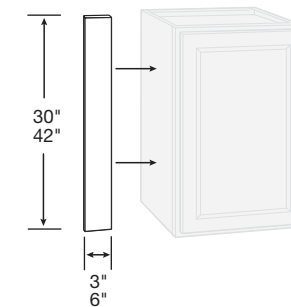
VENEER END PANELING



- Finished veneer panels fit flush
- Umber panels feature stained veneers
- White and Pebble panels are laminate
- Wall panels are 11 1/4" deep, 30" or 42" high
- Base panels are 23 1/4" deep x 34 1/2" high
- Finished panel is 48" wide x 34 1/2" high

WALL PANEL	BASE PANEL	FINISHED PANELING
WEP30	BEP34	FP4834
WEP42		

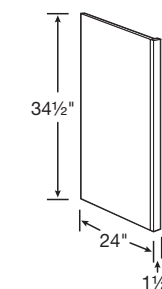
WALL & BASE FILLERS



- Fillers are 3/4" plywood finished on the face only

3" FILLER	6" FILLER
UF3P	UF6P
UF342P	UF642P

DISHWASHER RETURN



- Reversible for left or right installation
- Exterior finish to match
- Field trimmable to 1"
- Can be notched for toe kick in the field

34 1/2" HIGH
DWR1_5

OVEN FILLER

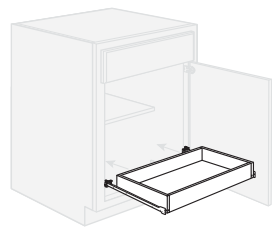


- Fillers are 3/4" plywood finished on the face only

91 1/2" HIGH

UF392P

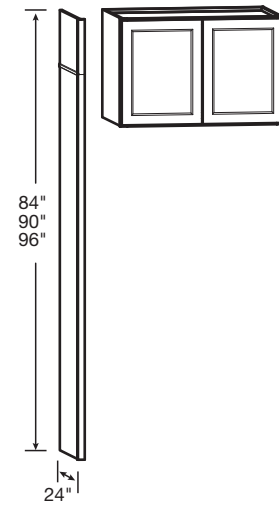
SLIDING SHELF KIT



- Ball-bearing drawer glides
- Hardwood drawer box SSK24 fits in 24" wide base
- Hardwood drawer box SSK30 fits in 30" wide base
- Ready to assemble accessory kit requiring field installation
- Kit includes sliding shelf and all hardware

SSK24
SSK30

REFRIGERATOR RETURN KIT

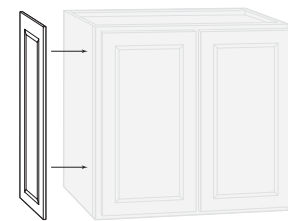


- Kit includes one 84" tall end panel, one 12" tall panel, one 6" tall panel, and one piece of scribe molding
- Kits and Wall Cabinets combine to achieve 84", 90", or 96" overall heights
- Pairs with 36" wide wall cabinets, sold separately—see Wall Cabinets section
- Refrigerator Return Kit does not create a stand-alone cabinet; must be anchored to other cabinets/wall studs to be secure

96" HIGH

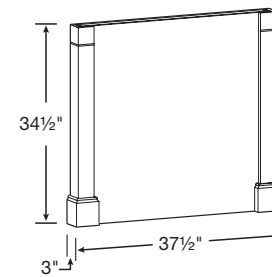
RR96

DECORATIVE MATCHING DOORS



WALL	BASE			
12" Deep	15" Deep	18" Deep	24" Deep	
DMDW30	DMDW30 15D	DMDW30 18D	DMDB	
DMDW36				
DMDW42				

DECORATIVE ISLAND END PANEL KIT

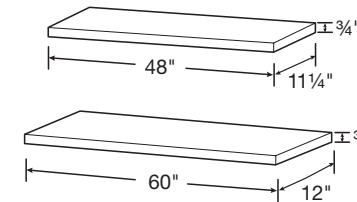


- One post ships loose
- Panel can be cut to accommodate different depths

34 1/2" HIGH

ISLAND PANEL KIT

FINISHED SHELVES



- 3/4" depth difference between shelf lengths
- Laminate finish on top, bottom, two short ends, and one long end

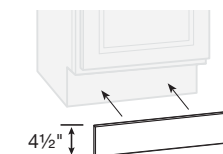
48" WIDE

11 1/4" Deep
FS4812

60" WIDE

12" Deep
FS6012

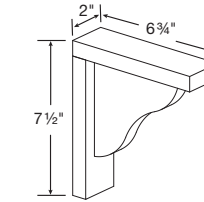
TOE KICK



- 9 1/2" long

BTK8

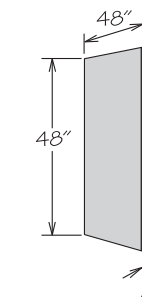
COUNTERTOP CORBEL



- For decorative use only

CS8

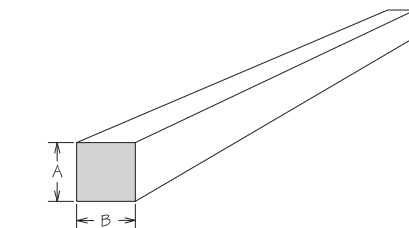
CABINET REPAIR MATERIAL



- Back features 3/16" MDF finished on one side with a natural woodgrain look
- Floor features 1/2" thick particleboard finished on both sides with a natural woodgrain look

BACK	A	FLOOR	A
BACK-W48X48	3/16"	FLOOR48X48	1/2"

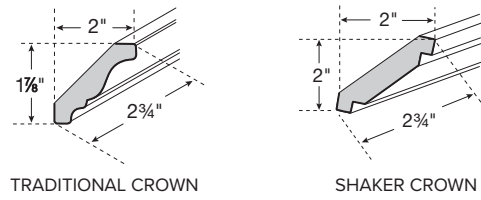
CLEATS



- Unfinished

	A	B	LENGTH
HWC 1/2X1/2X91.5	1/2"	1/2"	91 1/2"
HWC 3/4X3/4X91.5	3/4"	3/4"	91 1/2"
HWC 1X2X91.5	3/4"	1 1/2"	91 1/2"
HWC 2X4X91.5	1 1/2"	3 1/2"	91 1/2"

CROWN MOLDINGS

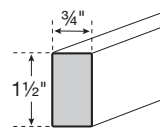


- 91 1/2" long
- Bold line indicates finished surfaces

TRADITIONAL CROWN
CM8

SHAKER CROWN
ACM8

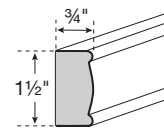
MOLDING STOCK



- 91 1/2" long
- Bold line indicates finished surfaces

SQUARE EDGE
SS1_596

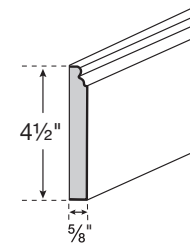
LIGHT RAIL MOLDING



- 91 1/2" long
- Bold line indicates finished surfaces

DECORATIVE EDGE
LBM8

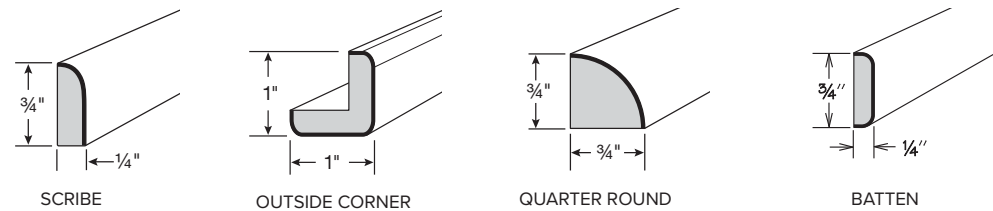
BASE MOLDING



- 91 1/2" long
- Bold line indicates finished surfaces

BASE
CLBM8

TRIM MOLDING



- 91 1/2" long
- Bold line indicates finished surfaces

SCRIBE
SM8

OUTSIDE CORNER
OCM8

QUARTER ROUND
SHM8

BATTEN
BM8

CLASSIC KNOB
Polished Chrome



KNOB 1173PC

CLASSIC KNOB
Satin Nickel



KNOB 1173SN

CLASSIC KNOB
Modern Brushed Gold



KNOB 1173MG

CLASSIC KNOB
Matte Black



KNOB 1173MB

T-BAR PULL
Polished Chrome



- 3" Center
- Overall Length: 5"

PULL 1701PC

T-BAR PULL
Satin Nickel



- 3" Center
- Overall Length: 5"

PULL 1701SN

T-BAR PULL
Modern Brushed Gold



- 3" Center
- Overall Length: 5"

PULL 1701MG

T-BAR PULL
Matte Black



- 3" Center
- Overall Length: 5"

PULL 1701MB



Functional Kitchen Upgrades

USE EVERY INCH OF YOUR KITCHEN

Keep counters free of clutter with functional additions like drawer pull-outs and hidden wastebaskets. Get more out of your space with plenty of storage and instant access to kitchen tools.



REFRIGERATOR RETURN KIT



3-DRAWER BASE



STANDARD BUTT DOORS ON CABINETS 27" THROUGH 36"



FULLY CONCEALED AND ADJUSTABLE HINGES



ISLAND END PANELS



Important Information

1-YEAR LIMITED WARRANTY

1-year limited warranty applies to Origins by Timberlake cabinets. Timberlake hereby warrants to the original homeowner, for residential applications only, that all cabinets and accessories manufactured and sold by Timberlake are free from defects in material and workmanship for a period of one year from the date: (a) that you purchase your new home, or (b) that you install new Timberlake cabinets or accessories in your remodeled home, as the case may be. This warranty is expressly limited to repair or replacement of the defective part at the discretion of Timberlake and does not include labor for removal or replacement. This warranty does not extend to defects caused by improper handling, storage, installation, assembly or disassembly, intentional damage, product modifications, exposure to the elements including humidity which may result in warping or splitting, accidental misuse, abuse, or negligence.

Natural woods may vary in texture, color, and wood grain, and exhibit subtle changes as they age. For example, wood joints may eventually have visible cracking around the joint area, and cabinet colors may darken or lighten over time. Sunlight, smoke, moisture, household cleaners, and other environmental conditions may cause materials to vary from their original color and/or to warp, split, or crack. These variations are considered to be the nature of the material in relation to its environmental exposure and are not covered under this warranty.

LIMITATIONS & DISCLAIMERS

TIMBERLAKE MAKES NO OTHER WARRANTIES OTHER THAN THOSE SET FORTH HEREIN, AND ALL OTHER WARRANTIES ARE HEREBY DISCLAIMED. THE IMPLIED WARRANTIES OF MERCHANTABILITY AND FITNESS FOR A PARTICULAR PURPOSE ARE LIMITED IN DURATION TO THE LENGTH OF THE HOMEOWNER'S WARRANTY PERIOD. THE LIMITED WARRANTIES SET FORTH HEREIN ARE LIMITED TO THE FIRST AND ORIGINAL HOMEBUYER, AS THE CASE MAY BE, AND ARE NOT TRANSFERABLE THEREAFTER. IN NO EVENT SHALL TIMBERLAKE BE LIABLE FOR INCIDENTAL OR CONSEQUENTIAL DAMAGES TO THE HOMEOWNER OR TO ANY THIRD PARTY, INCLUDING, WITHOUT LIMITATION, DAMAGES ARISING FROM PERSONAL INJURY, LOST PROFITS, LOSS OF BUSINESS OPPORTUNITY, LOSS OF PROPERTY, ECONOMIC LOSSES, OR STATUTORY OR EXEMPLARY DAMAGES, WHETHER FROM NEGLIGENCE, WARRANTY, STRICT LIABILITY, OR OTHERWISE. Some states do not allow the exclusion or limitation of incidental or consequential damages, or limitations on how long an implied warranty lasts, so the above limitations and exclusions may not apply to you. This warranty gives you specific legal rights, and you may also have other rights, which vary from state to state.

CLAIMS

All claims for defective cabinets and accessories must be submitted to Timberlake in writing and must specify the defects present in the cabinets and accessories. After Timberlake has had an opportunity to inspect the cabinets and accessories, they will, at their discretion, either replace defective cabinets and accessories or repair any defects in the cabinets and accessories. All claims must be submitted to the following address: Timberlake Claims Department, 561 Shady Elm Road, Winchester, Virginia 22602

WARRANTY INFORMATION FOR COMMERCIAL PURCHASERS

To merchants who purchase Timberlake cabinets and accessories for resale in any form, including builders, dealers and distributors, Timberlake extends the following warranty: Timberlake will replace, without charge, any cabinet and accessory that is not saleable because of defects in material or manufactured workmanship discovered within one year from the date of delivery to merchant. Notice of claim under this warranty must be given promptly, in no case later than ninety (90) days after defect becomes known to merchant. THIS WARRANTY IS IN LIEU OF ALL OTHER WARRANTIES, EXPRESSED OR IMPLIED. TIMBERLAKE HEREBY DISCLAIMS ALL IMPLIED WARRANTIES, INCLUDING THE WARRANTIES OF MERCHANTABILITY AND FITNESS FOR A PARTICULAR PURPOSE. THE REMEDY OF REPLACEMENT IS THE SOLE AND EXCLUSIVE REMEDY FOR TIMBERLAKE'S OBLIGATIONS ARISING FROM THE SALE OF ITS CABINETS AND ACCESSORIES. IN NO EVENT WILL TIMBERLAKE BE LIABLE FOR INCIDENTAL OR CONSEQUENTIAL LOSS OR DAMAGES, including, without limitation, costs of installation, removal or reinstallation, damage to other property, loss of profits, loss of goodwill, or other economic loss, whether such incidental or consequential loss or damage is claimed on account of breach of warranty, breach of contract, negligence, strict liability in tort, or any other legal theory. CABINETS AND ACCESSORIES SOLD FOR RESALE ARE ALL SUBJECT TO THESE TERMS, AND ALL OFFERS ARE EXPRESSLY CONDITIONED UPON ACCEPTANCE OF THESE TERMS.

AUSTIN WHITE





Origins™

BY TIMBERLAKE

561 Shady Elm Road
Winchester, Virginia 22602
www.timberlake.com

© 2026 American Woodmark Corporation
9/20 TBL98951 1.5k

Photography is for illustration purposes only. Actual colors may vary slightly due to the printing process. For actual color selections, please consult your Timberlake representative. Every effort was made to assure accuracy of the information contained herein at the time of printing; however, Timberlake makes no representations to such accuracies. If you would like further clarification about any of our products or processes, please call Timberlake Customer Care.