



Origins™

BY TIMBERLAKE



Table of Contents

Door Finishes

White 06

Pebble..... 08

Umber 10

At a Glance 12

Product Specifications

An Inside Look 16

Cabinet Face Dimensions 18

Wall Cabinets.....20

Base Cabinets 21

Tall Cabinets22

Vanity Cabinets23

Accessory Items23

Molding.....26

Hardware 27

Functional Kitchen Additions.....28

Important Information30



The
Timberlake®
Advantage



Your trusted partner

We’re proactive, planning ahead to prevent problems instead of just reacting to them. We design to save money, schedule to make every minute count, and install for one-trip satisfaction.



We focus on cabinets

That’s all we’ve done for the past three decades. When you team up with Timberlake, you benefit from years of experience and refinement. That means high-quality materials, craftsmanship, and service—start to finish.



Quality meets value

Origins by Timberlake showcases modern styling in an economical design offering. We make it easy to choose the perfect combination of features for your needs and budget.



Door Finishes

Origins by Timberlake boasts one door style in three on-trend, designer-favorite finishes - White, Pebble, and Umber - that combine style with affordability.



Chatham Pebble



Features

Construction

Routed MDF
Recessed panel

Door Details

Full overlay

Finish

Thermofoil

Hardware

Required



White

Chatham Door Style

The color white has a remarkable impact on any living space, with its pure and pristine quality. It makes any room appear larger and more inviting, saturating its environment with a sense of spaciousness and airiness. White is timeless and elegant, providing a blank canvas that harmonizes effortlessly with various design styles and color schemes. Its clean and bright aesthetic fosters a sense of serenity and freshness, especially in spaces such as kitchens. White is a versatile choice that allows for creativity and personalization, whether through contrasting accents or a minimalist, contemporary vibe.



Chatham White



Features

Construction

Routed MDF
Recessed panel

Door Details

Full overlay

Finish

Thermofoil

Hardware

Required



Pebble

Chatham Door Style

Pebble is a fusion of warm brown and subtle gray, creating a unique and versatile aesthetic. The result is a rich, earthy hue that emanates a sense of comfort and sophistication. This finish strikes a harmonious balance between traditional and contemporary design, making it an ideal option for a variety of decor styles.





Features

Construction

Mortise & Tenon

Door Details

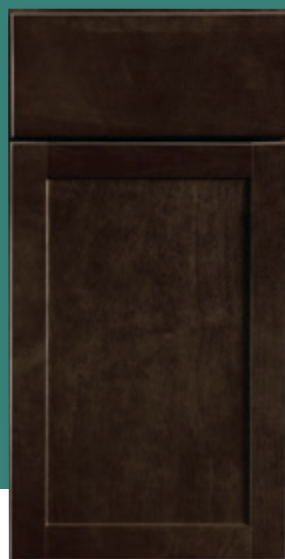
Full Overlay

Finish

Stain

Hardware

Required



Umber

Chatham Door Style

Umber gives a timeless elegance and warmth. It highlights the natural beauty of wood through its deep, earthy tones that convey a sense of authenticity and comfort. The intricate patterns and texture create a rich tactile and visual experience, making any space feel welcoming and cozy. Umber not only offers a classic and enduring appeal but also adds a touch of luxury.



Chatham Umber



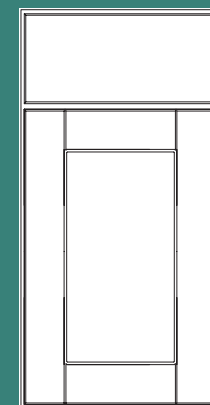
At a Glance

Care & Cleaning

While our laminate, staining, and wood finishing processes promote durability, care should be taken to preserve the original factory finish:

- Wipe up spills immediately
- Use mild soaps only
- Be sure to read all cabinet care guidelines and cleaning product instructions carefully

Chatham Finishes



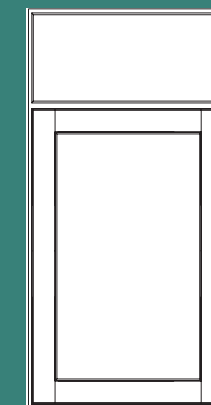
Door: Recessed Panel
Overlay: Full Overlay
Construction: Routed MDF
Hardware: Required



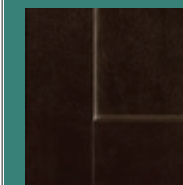
White Thermofoil
1SSW



Pebble Thermofoil
1SDV



Door: Recessed Panel
Overlay: Full Overlay
Construction: Hardwood
Mortise & Tenon
Hardware: Required



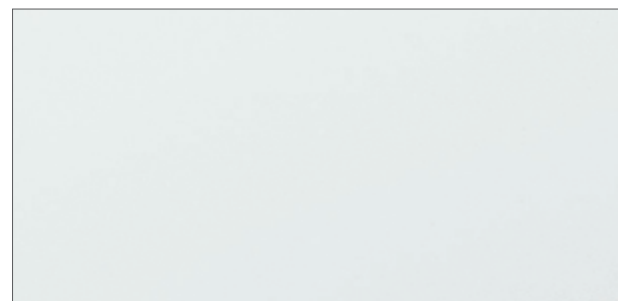
Umber Stain
1SJM

Choose Your Material



Hardwood

Hardwood cabinetry has a dense structure and comes from a combination of deciduous trees such as maple, beech, birch, or poplar. Natural colors range from light blonde to dark reddish-brown tones. These hardwoods may contain mineral streaks, slight differences in graining, and color variations.



Thermofoil

Thermofoil is a process whereby a thick vinyl film is bonded permanently to a warp-resistant engineered wood core. Because the color is consistent throughout the film, the surface is durable, easy to clean, and resistant to chipping and cracking.





Product Specs

Create the kitchen that perfectly fits your lifestyle. You'll find the quality construction and features at prices that help you get the most kitchen for your budget—and years of enjoyment.



Chatham Umber



An Inside Look

All cabinetry manufactured by Timberlake is certified by the Kitchen Cabinet Manufacturers Association (KCMA).

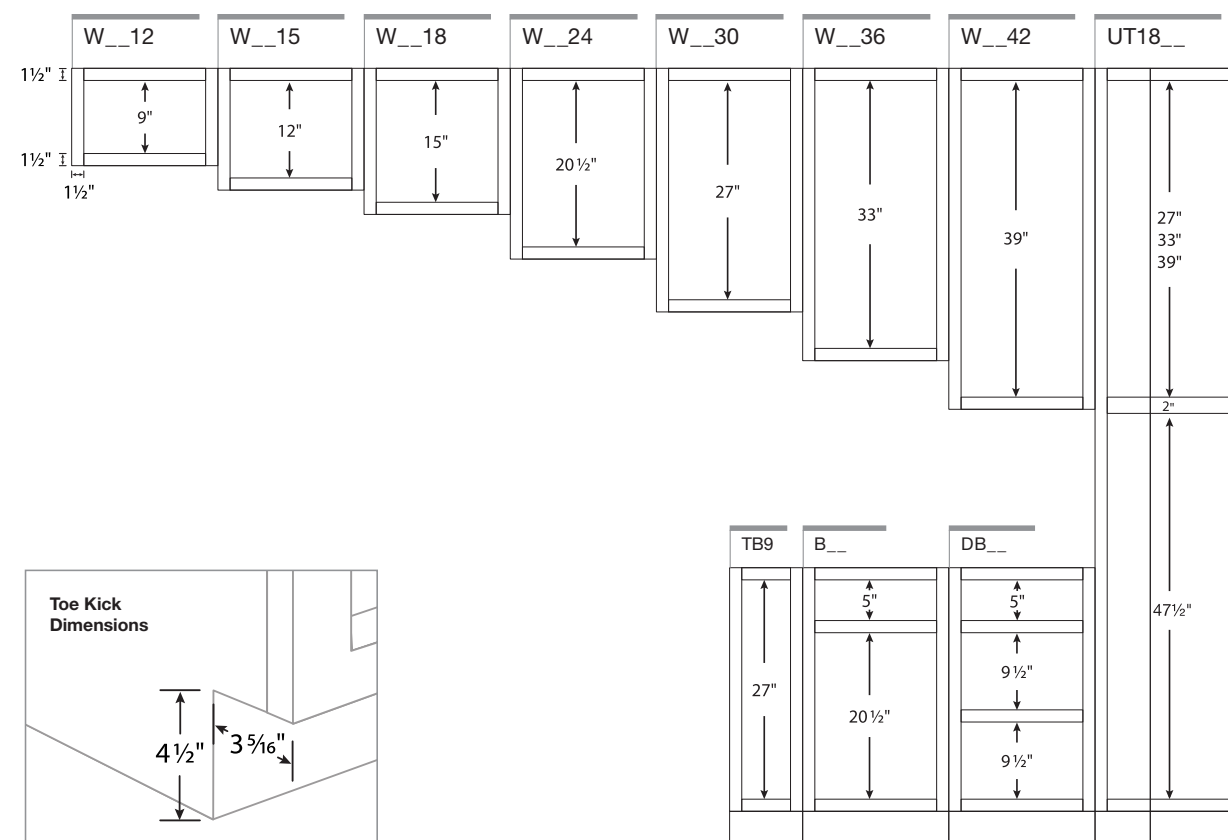
Timberlake has received certification by KCMA Environmental Stewardship Program on all products.



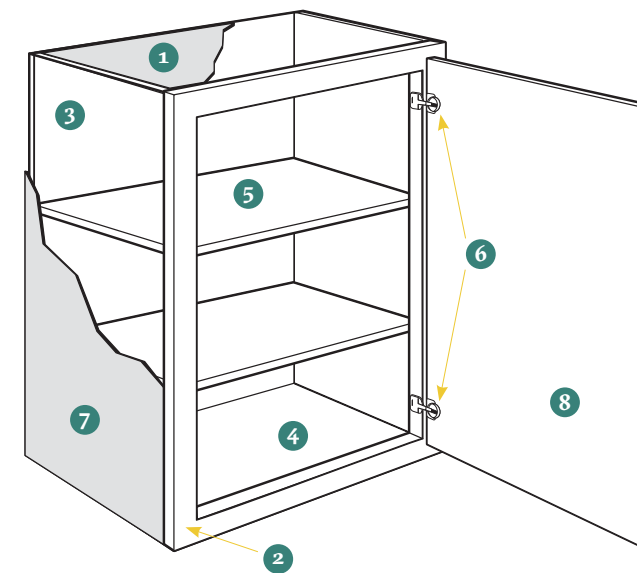
KITCHEN CABINET MANUFACTURERS ASSOCIATION
ENVIRONMENTAL STewardship PROGRAM
ALL PRODUCTS IMPACT THE ENVIRONMENT
FOR TOP PRODUCT DESIGN, SEE KCMAS.ORG

Cabinet Opening Dimensions

Illustrations specify dimensions of vertical stiles and horizontal rails, inset toe kick, and standard interior opening heights. When selecting cabinetry for installation above or near any appliance, refer to the appliance manufacturer's specification for clearance and venting requirements.

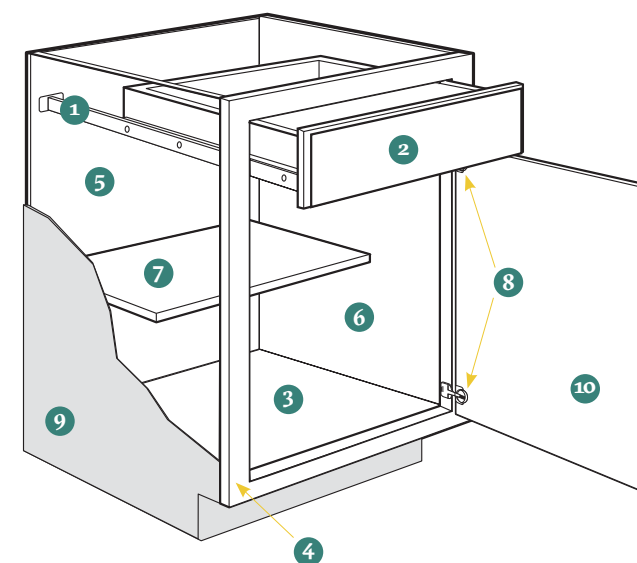


Wall Cabinets



- 1 Top/Bottom Panels:** 3/8" engineered wood
- 2 Face Frame:** 1 1/2" wide frame material
- 3 Back Panel:** Full 3/8" back panel
- 4 Interiors:** Natural wood-grain laminate finish on engineered wood
- 5 Shelves:** 3/4" thick adjustable shelves
- 6 Hinges:** Fully concealed and adjustable
- 7 End Panels:** 1/2" engineered wood with laminated exterior to match cabinet finish
- 8 Door:** Reversible door on single-door cabinets for left or right opening; hinged on the left from the factory; double-door cabinets are butt doors with no center stile

Base Cabinets



- 1 Drawer Glides:** 3/4" access ball bearing
- 2 Drawer Box:** Hardwood, 4-sided drawer box with fully encapsulated bottom
- 3 Bottom Panels:** 3/8" engineered wood
- 4 Face Frame:** 1 1/2" wide frame material
- 5 Back Panel:** Full 3/8" back panel with a natural laminate interior
- 6 Interiors:** Natural wood-grain laminate finish on engineered wood
- 7 Shelf:** 3/4" thick adjustable half-depth shelf
- 8 Hinges:** Fully concealed and adjustable
- 9 End Panels:** 1/2" engineered wood with laminated exterior to match cabinet finish
- 10 Door:** Reversible door on single-door cabinets for left or right opening; hinged on the left from the factory; double-door cabinets are butt doors with no center stile

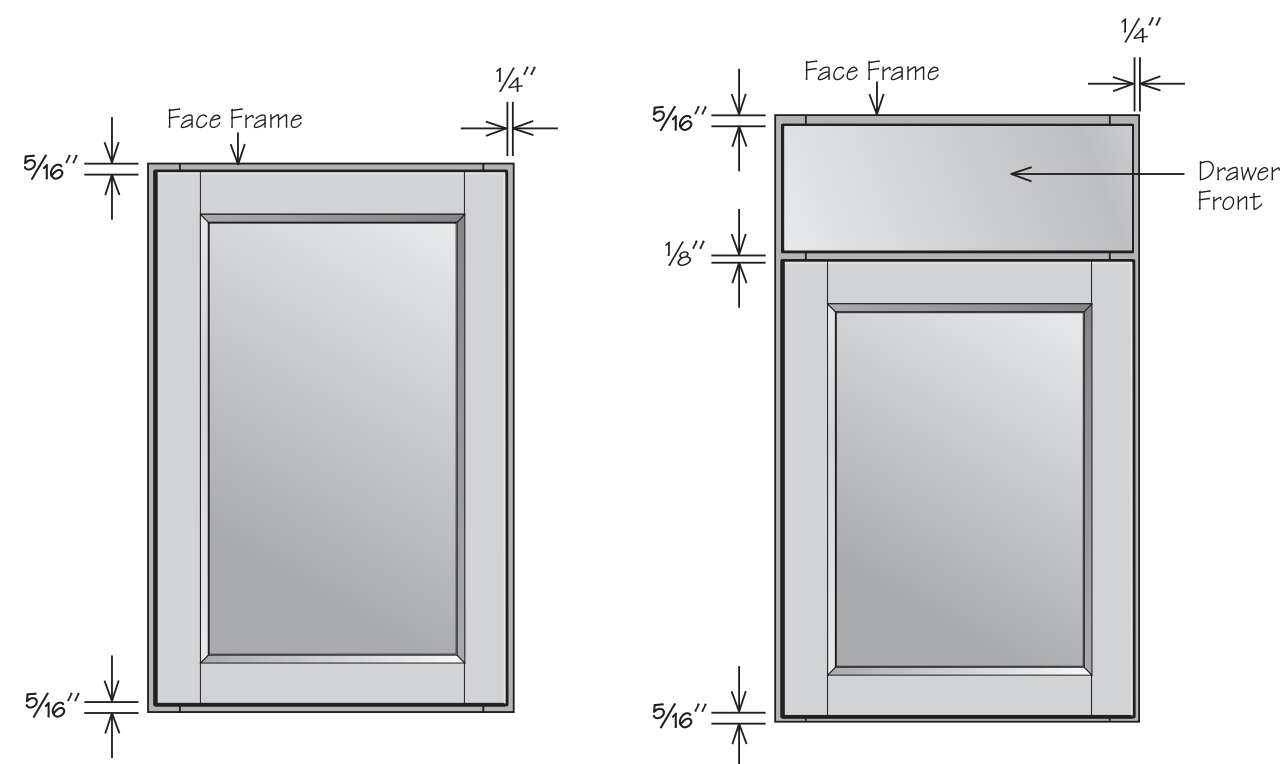


Cabinet Face Dimensions

Sized to cover nearly all of the cabinet face frame, full overlay door styles require decorative hardware to complete installation.

Full Overlay

Full overlay doors are sized to cover nearly all of the cabinet face frame. Full overlay door styles require decorative hardware. To facilitate proper door operation, include at least a 1" filler between the hinged side of full overlay door styles and deeper adjacent objects including cabinets, walls, appliances, and countertops.



Chatham Pebble



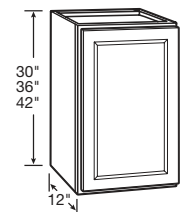
Chatham White



Wall Cabinet Specifications

Base Cabinet Specifications

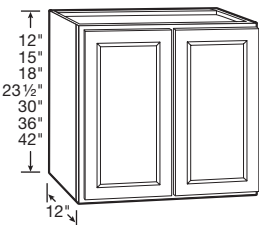
Wall Cabinet | 1 Door



- Includes two adjustable shelves
- Hinged left, field reversible

30" HIGH	36" HIGH	42" HIGH
W1230	W1236	W1242
W1530	W1536	W1542
W1830	W1836	W1842
W2130	W2136	W2142
W2430	W2436	W2442

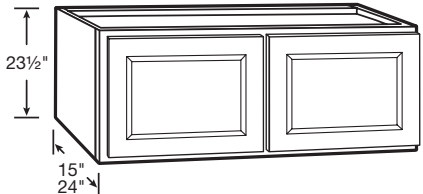
Wall Cabinet | 2 Butt Doors



12" HIGH • No Shelf	18" HIGH • No Shelf
W3012 BUTT W3612 BUTT	W3018 BUTT W3618 BUTT
24" HIGH • 1 Shelf	30" HIGH • 2 Shelves
W3024 BUTT W3624 BUTT	W2730 BUTT W3030 BUTT W3330 BUTT W3630 BUTT
36" HIGH • 2 Shelves	42" HIGH • 2 Shelves
W2736 BUTT W3036 BUTT W3336 BUTT W3636 BUTT	W2742 BUTT W3042 BUTT W3342 BUTT W3642 BUTT

Refrigerator Wall Cabinet | 2 Butt Doors

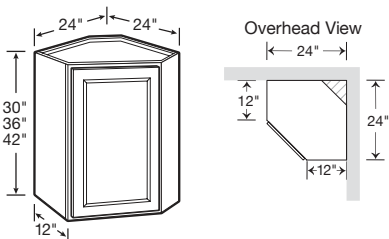
NEW! SIZE



- Includes one adjustable shelf

24" HIGH • 1 Shelf
24" Deep W3624X24DP BUTT
15" Deep W3024X15DP BUTT

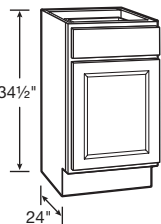
Corner Wall Cabinet



- Installs in a 24" x 24" wall area
- 30" high includes one adjustable shelf
- 36" high and 42" high include two adjustable shelves
- Hinged left, field reversible

30" HIGH	36" HIGH	42" HIGH
CW2430	CW2436	CW2442

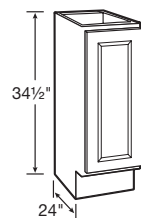
Base | 1 Door and 1 Drawer



- Ball-bearing drawer glides
- One half-depth adjustable shelf included
- Hinged left, field reversible

34½" HIGH	
B12	B21
B15	B24
B18	

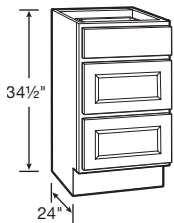
Full-Height Base Cabinet | 1 Door



- One half-depth adjustable shelf included
- Hinged left, field reversible

34 1/2" HIGH
TB9

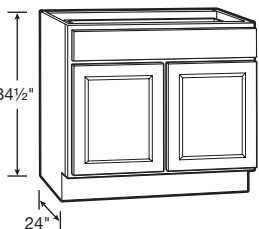
Drawer Base Cabinet | 3 Drawers



- 18" wide and 24" wide include ball-bearing drawer glides
- 30" wide and 36" wide include full-extension, heavy-duty drawer glides on all three drawers
- Deep drawers feature five-piece drawer fronts

34½" HIGH	
DB18	DB30
DB24	DB36 1TD

Base | 2 Butt Doors and 1 Drawer

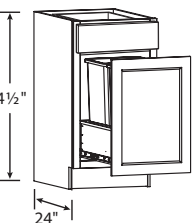


- Ball-bearing drawer glides
- One half-depth adjustable shelf included

34 1/2" HIGH
B27 BUTT B30 BUTT B33 BUTT B36 1TD BUTT

Base Cabinet | 1 Door with Wastebasket Pull-Out and 1 Drawer

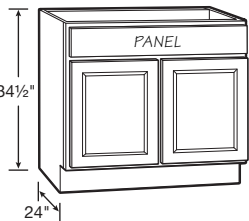
NEW! PRODUCT



- Top drawer includes ball-bearing drawer glides
- Wastebasket pullout includes heavy-duty ball-bearing drawer glides and two 35-quart capacity bins

34 1/2" HIGH
BWBB18-2

Sink/Cooktop Base | 2 Butt Doors and 1 Panel



- Full-height back panel
- No shelf
- Subtract 1 1/2" from width and 1 1/8" from depth for available sink bowl opening
- Refer to sink/cooktop manufacturer's specifications for adequate clearance and required installation materials
- Touch-up kit included

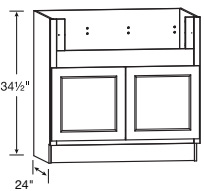
34 1/2" HIGH
SB30 BUTT TU SB36 BUTT TU



Base Cabinet Specifications

Deep Sink Base

NEW! PRODUCT

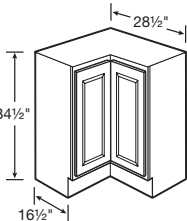


- 2" stiles and 4" rail are trimmable to accommodate various size sinks/cooktops
- Smaller size sinks/cooktops can be accommodated with use of 3" or 6" filler
- No shelf

34 1/2" HIGH
DSB36 BUTT TU

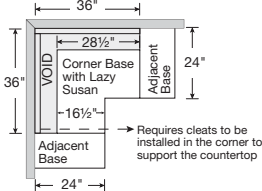
APRON CUTOUT DIMENSIONS			
ACTUAL WIDTH	MAX. WIDTH	ACTUAL HEIGHT	MAX. HEIGHT
29"	33"	7 1/2"	11"

Corner Base Carousel | Spin Unit



- Installs in a 36" x 36" wall area
- Two-piece overlay door hinged together in the middle
- Two 360° independently rotating metal racks
- Exterior side panels are natural laminate

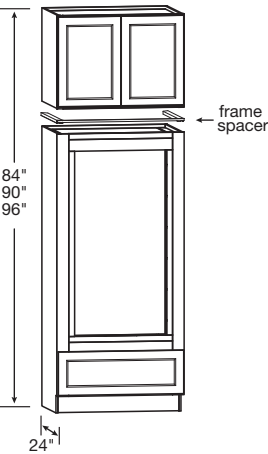
34 1/2" HIGH
CAR36



- Hinged left, reversible in field
- Additional space recommended if appliance is installed on the hinged side of this cabinet for proper door operation
- If unit has an exposed side, order an end panel separately

Tall Cabinet Specifications

Double Oven Cabinet | 2 Butt Doors and 1 Drawer



- Includes drawer with full-extension, heavy-duty drawer glides
- Includes 24" deep wall cabinet (ships separately)
- Overhead wall cabinet is not pre-installed to oven cabinet, comes as two pieces, boxed separately
- Rails and stiles around oven opening are trimmable
- Cut-out dimensions:
 - Width: 24" minimum, 30" maximum
 - Height: 47 5/8" minimum, 52 1/8" maximum
- Frame spacer included in OVD339624 BUTT only
- 96" high double oven overhead wall cabinet is 23 1/2" high

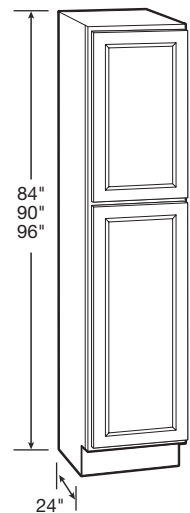
84" HIGH
OVD338424 BUTT

90" HIGH
OVD339024 BUTT

96" HIGH
OVD339624 BUTT

Pantry Cabinet | 24" Deep

NEW! PRODUCT



- Upper door lines up with 30", 36" and 42" high wall cabinets
- 84" and 90" includes three full-depth adjustable shelves and one full-depth fixed shelf
- 96" includes four full-depth adjustable shelves and one full-depth fixed shelf
- 96" has removable toe kick that is field installed

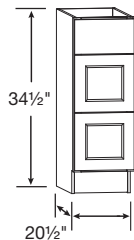
84" HIGH
UT1824X84 AS

90" HIGH
UT1824X90 AS

96" HIGH
UT1824X96 AS

Vanity Cabinet Specifications

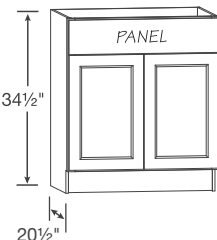
Vanity Drawer Base | 3 Drawers



- Deep drawers feature five-piece drawer fronts

34 1/2" HIGH
VDB1234H
VDB1534H
VDB1834H

Vanity Sink Base | 2 Butt Doors and 1 Drawer Panel



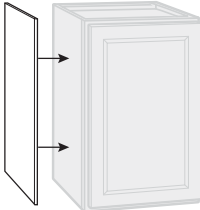
- No shelf
- Subtract 1 1/2" from width and 1 1/8" from depth for available sink bowl opening
- Refer to sink manufacturer's specifications for adequate clearance and required installation materials

34 1/2" HIGH
VSB2434H BUTT
VSB2734H BUTT
VSB3034H BUTT

VSB3334H BUTT
VSB3634H BUTT

Accessory Item Specifications

Veneer End Paneling



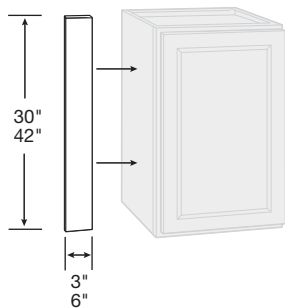
- Finished veneer panels fit flush
- Umber panels feature stained veneers
- White and Pebble panels are laminate
- Wall panels are 11 1/4" deep, 30" or 42" high
- Base panels are 23 1/4" deep x 34 1/2" high
- Finished panel is 48" wide x 34 1/2" high

WALL PANEL
WEP30
WEP42

BASE PANEL
BEP34

FINISHED PANELING
FP4834

Wall & Base Fillers

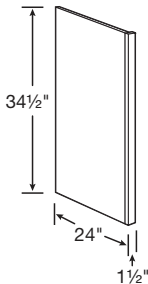


- Fillers are 3/4" plywood finished on the face only

3" FILLER
UF3P
UF342P

6" FILLER
UF6P
UF642P

Dishwasher Return



- Reversible for left or right installation
- Exterior finish to match
- Field trimmable to 1"
- Can be notched for toe kick in the field

34 1/2" HIGH
DWR1_5



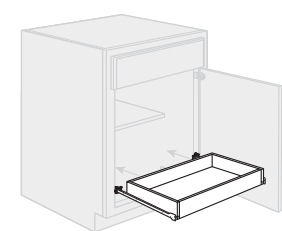
Oven Filler



- Fillers are 3/4" plywood finished on the face only

91 1/2" HIGH
UF392P

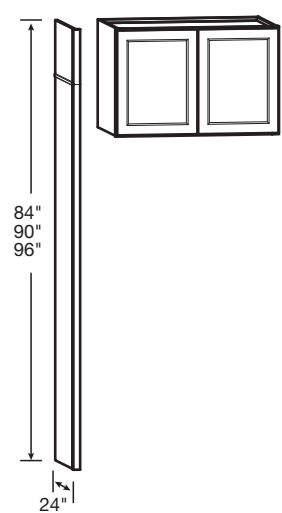
Sliding Shelf Kit



- Ball-bearing drawer glides
- Hardwood drawer box SSK24 fits in 24" wide base
- Hardwood drawer box SSK30 fits in 30" wide base
- Ready to assemble accessory kit requiring field installation
- Kit includes sliding shelf and all hardware

SSK24
SSK30

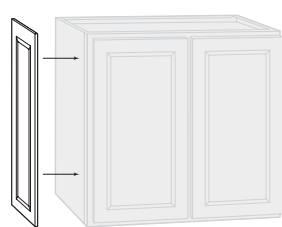
Refrigerator Return Kit



- Kit includes one 84" tall end panel, one 12" tall panel, one 6" tall panel, and one piece of scribe molding
- Kits and Wall Cabinets combine to achieve 84", 90", or 96" overall heights
- Pairs with 36" wide wall cabinets, sold separately—see Wall Cabinets section
- Refrigerator Return Kit does not create a stand-alone cabinet; must be anchored to other cabinets/wall studs to be secure

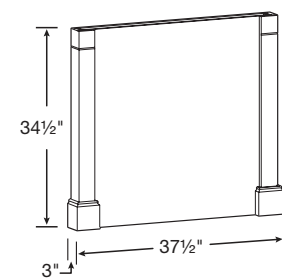
96" HIGH
RR96

Decorative Matching Doors



WALL	BASE		
12" Deep DMDW30 DMDW36 DMDW42	15" Deep DMDW30 15D	18" Deep DMDW30 18D	24" Deep DMDB

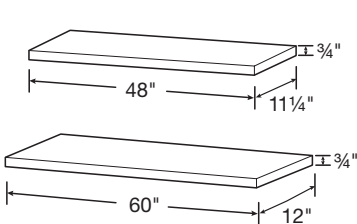
Decorative Island End Panel Kit



- One post ships loose
- Panel can be cut to accommodate different depths

34 1/2" HIGH
ISLAND PANEL KIT

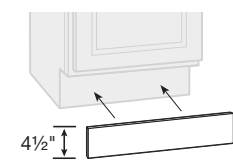
Finished Shelves



- 3/4" depth difference between shelf lengths
- Laminate finish on five sides

48" WIDE 11 1/4" Deep FS4812	60" WIDE 12" Deep FS6012
------------------------------------	--------------------------------

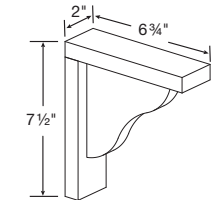
Toe Kick



- 91 1/2" long

BTK8

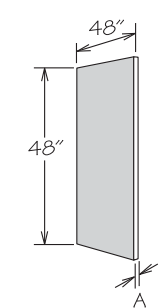
Countertop Corbel



- For decorative use only

CS8

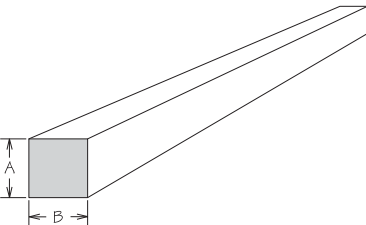
Cabinet Repair Material



- Back features 3/16" MDF finished on one side with a natural woodgrain look
- Floor features 1/2" thick particleboard finished on both sides with a natural woodgrain look

BACK	A	FLOOR	A
BACK-W48X48	3/16"	FLOOR48X48	1/2"

Cleats

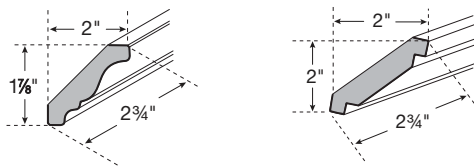


- Unfinished

	A	B	LENGTH
HWC 1/2X1/2X91.5	1/2"	1/2"	91 1/2"
HWC 3/4X3/4X91.5	3/4"	3/4"	91 1/2"
HWC 1X2X91.5	3/4"	1 1/2"	91 1/2"
HWC 2X4X91.5	1 1/2"	3 1/2"	91 1/2"



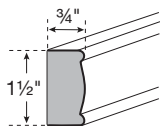
Crown Moldings



TRADITIONAL CROWN	SHAKER CROWN
CM8	ACM8

- 91 1/2" long
- Bold line indicates finished surfaces

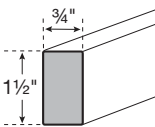
Light Rail Molding



DECORATIVE EDGE
LBM8

- 91 1/2" long
- Bold line indicates finished surfaces

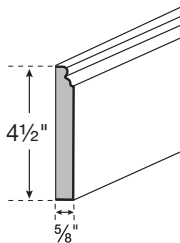
Molding Stock



SQUARE EDGE
SS1_596

- 91 1/2" long
- Bold line indicates finished surfaces

Base Molding



BASE
CLBM8

- 91 1/2" long
- Bold line indicates finished surfaces

Classic Knob
Polished Chrome



KNOB 1173PC

Classic Knob
Satin Nickel



KNOB 1173SN

Classic Knob
Modern Brushed Gold



KNOB 1173MG

Classic Knob
Matte Black



KNOB 1173MB

T-Bar Pull
Polished Chrome



- 3" Center
- Overall Length: 5"

PULL 1701PC

T-Bar Pull
Satin Nickel



- 3" Center
- Overall Length: 5"

PULL 1701SN

T-Bar Pull
Modern Brushed Gold



- 3" Center
- Overall Length: 5"

PULL 1701MG

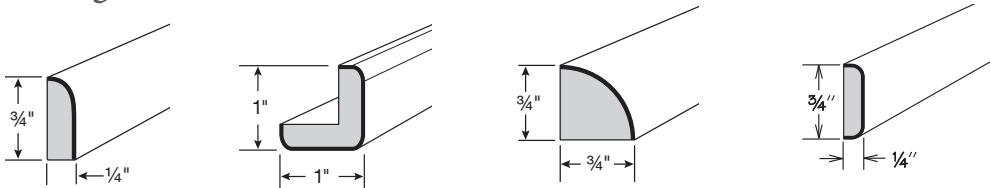
T-Bar Pull
Matte Black



- 3" Center
- Overall Length: 5"

PULL 1701MB

Trim Molding



- 91 1/2" long
- Bold line indicates finished surfaces

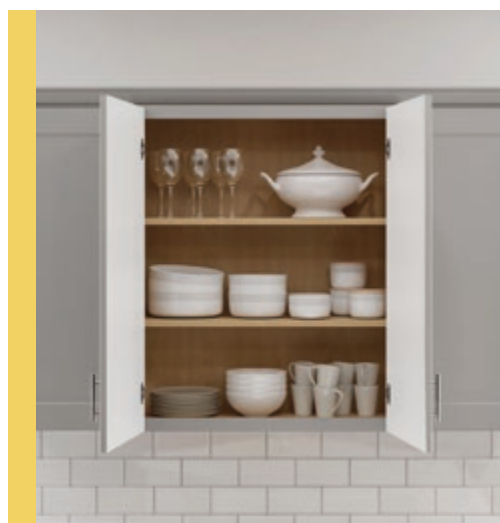
SCRIBE	OUTSIDE CORNER	QUARTER ROUND	BATTEN
SM8	OCM8	SHM8	BM8



Functional Kitchen Upgrades

Smart additions increase functionality for a kitchen that's a pleasure to use.

Functional additions help homeowners unclutter their counters and drawers. They get more work and storage space, and instant access to kitchen tools. These additions make life in the kitchen a piece of cake.



Standard Butt Doors on Cabinets 27" Wide and Up



Fully Concealed and Adjustable Hinges



Island End Panels



Refrigerator Return Kit



3-Drawer Base



Important Information

1-Year Limited Warranty

1-year limited warranty applies to Origins by Timberlake cabinets. Timberlake hereby warrants to the original homeowner, for residential applications only, that all cabinets and accessories manufactured and sold by Timberlake are free from defects in material and workmanship for a period of one year from the date: (a) that you purchase your new home, or (b) that you install new Timberlake cabinets or accessories in your remodeled home, as the case may be. This warranty is expressly limited to repair or replacement of the defective part at the discretion of Timberlake and does not include labor for removal or replacement. This warranty does not extend to defects caused by improper handling, storage, installation, assembly or disassembly, intentional damage, product modifications, exposure to the elements including humidity which may result in warping or splitting, accidental misuse, abuse, or negligence.

Natural woods may vary in texture, color, and wood grain, and exhibit subtle changes as they age. For example, wood joints may eventually have visible cracking around the joint area, and cabinet colors may darken or lighten over time. Sunlight, smoke, moisture, household cleaners, and other environmental conditions may cause materials to vary from their original color and/or to warp, split, or crack. These variations are considered to be the nature of the material in relation to its environmental exposure and are not covered under this warranty.

Limitations & Disclaimers

TIMBERLAKE MAKES NO OTHER WARRANTIES OTHER THAN THOSE SET FORTH HEREIN, AND ALL OTHER WARRANTIES ARE HEREBY DISCLAIMED. THE IMPLIED WARRANTIES OF MERCHANTABILITY AND FITNESS FOR A PARTICULAR PURPOSE ARE LIMITED IN DURATION TO THE LENGTH OF THE HOMEOWNER'S WARRANTY PERIOD. THE LIMITED WARRANTIES SET FORTH HEREIN ARE LIMITED TO THE FIRST AND ORIGINAL HOMEBUYER, AS THE CASE MAY BE, AND ARE NOT TRANSFERABLE THEREAFTER. IN NO EVENT SHALL TIMBERLAKE BE LIABLE FOR INCIDENTAL OR CONSEQUENTIAL DAMAGES TO THE HOMEOWNER OR TO ANY THIRD PARTY, INCLUDING, WITHOUT LIMITATION, DAMAGES ARISING FROM PERSONAL INJURY, LOST PROFITS, LOSS OF BUSINESS OPPORTUNITY, LOSS OF PROPERTY, ECONOMIC LOSSES, OR STATUTORY OR EXEMPLARY DAMAGES, WHETHER FROM NEGLIGENCE, WARRANTY, STRICT LIABILITY, OR OTHERWISE. Some states do not allow the exclusion or limitation of incidental or consequential damages, or limitations on how long an implied warranty lasts, so the above limitations and exclusions may not apply to you. This warranty gives you specific legal rights, and you may also have other rights, which vary from state to state.

Claims

All claims for defective cabinets and accessories must be submitted to Timberlake in writing and must specify the defects present in the cabinets and accessories. After Timberlake has had an opportunity to inspect the cabinets and accessories, they will, at their discretion, either replace defective cabinets and accessories or repair any defects in the cabinets and accessories. All claims must be submitted to the following address: Timberlake Claims Department, Post Office Box 1980, Winchester, Virginia 22604.

Warranty Information for Commercial Purchasers

To merchants who purchase Timberlake cabinets and accessories for resale in any form, including builders, dealers and distributors, Timberlake extends the following warranty: Timberlake will replace, without charge, any cabinet and accessory that is not saleable because of defects in material or manufactured workmanship discovered within one year from the date of delivery to merchant. Notice of claim under this warranty must be given promptly, in no case later than ninety (90) days after defect becomes known to merchant. THIS WARRANTY IS IN LIEU OF ALL OTHER WARRANTIES, EXPRESS OR IMPLIED. TIMBERLAKE HEREBY DISCLAIMS ALL IMPLIED WARRANTIES, INCLUDING THE WARRANTIES OF MERCHANTABILITY AND FITNESS FOR A PARTICULAR PURPOSE. THE REMEDY OF REPLACEMENT IS THE SOLE AND EXCLUSIVE REMEDY FOR TIMBERLAKE'S OBLIGATIONS ARISING FROM THE SALE OF ITS CABINETS AND ACCESSORIES. IN NO EVENT WILL TIMBERLAKE BE LIABLE FOR INCIDENTAL OR CONSEQUENTIAL LOSS OR DAMAGES, including, without limitation, costs of installation, removal or reinstallation, damage to other property, loss of profits, loss of goodwill, or other economic loss, whether such incidental or consequential loss or damage is claimed on account of breach of warranty, breach of contract, negligence, strict liability in tort, or any other legal theory. CABINETS AND ACCESSORIES SOLD FOR RESALE ARE ALL SUBJECT TO THESE TERMS, AND ALL OFFERS ARE EXPRESSLY CONDITIONED UPON ACCEPTANCE OF THESE TERMS.





20
25



TIMBERLAKE®
CABINETS | BUILT BY
SERVICE

P.O. Box 1980

Winchester, Virginia 22604

www.timberlake.com

© 2024 American Woodmark Corporation

Photography is for illustration purposes only. Actual colors may vary slightly due to the printing process. For actual color selections, please consult your Timberlake representative. Every effort was made to assure accuracy of the information contained herein at the time of printing; however, Timberlake makes no representations to such accuracies. If you would like further clarification about any of our products or processes, please call Timberlake Customer Care.