

TIMBERLAKE

CABINETS



As smart as it is beautiful.

PRODUCT CATALOG 2025

WINDSOR MAPLE CIDER & PAINTED BISCONTI GLAZE

We think like *builders*.

America's top production builders rely on Timberlake. You should too.

Why? We do more for builders. Period.

We don't just provide on-trend, durable cabinetry, handcrafted in the USA. We provide a trusted partnership, understanding the challenges you face and looking for ways to contribute to your success, including short lead times, lower freight costs, and rapid response when the unexpected happens.



TOP CHOICE OF AMERICA'S BUILDERS

We understand what it takes to design and build beautiful kitchens on time and on-budget, which is why the top 20 builders choose to partner with us.



1M+ TIMBERLAKE HOMES

We prioritize consistency, reliability, and communication, and our customers appreciate that. That's why so many new builds are Timberlake homes.



LEADING THE MANUFACTURING PROCESS END-TO-END

Built-to-order by specialty craftsmen in 17 plants across the United States, Timberlake cabinetry owns production from end to end, resulting in shortened lead times and lower freight costs.

By the Numbers



1.5M
Cabinets

were installed for kitchens,
bathrooms, built-ins and
more in 2024.



100K+
Homes

were built using Timberlake
Cabinetry last year.



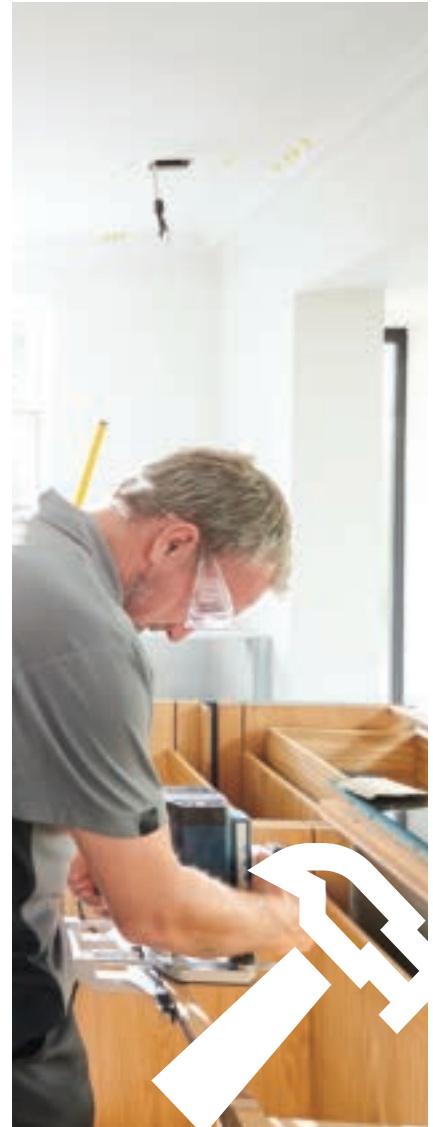
18
of the top
20 Builders

choose to work with
Timberlake, the top B2B
cabinetry provider in the USA.



350K
Service Trips

to create homes that delight
homebuilders and amaze
homeowners.



40
New Builders

chose Timberlake as their
supplier in 2024.

WINDSOR MAPLE CIDER & PAINTED BISCONTI GLAZE





Table of Contents

04

WHAT'S NEW & TRENDING

10

MODERN SPACES

New Haven
Barnett
Lausanne
Sonoma

16

TRANSITIONAL SPACES

Charleston
Maddox
Corban
Kinsdale
Downing
Fairfield

24

CLASSIC SPACES

Sierra Vista
Windsor
Beckley
Canton

30

BEYOND THE KITCHEN

Other Spaces
Finishing Touches

48

FUNCTIONAL KITCHEN

52

AN INSIDE LOOK

Features
Construction
Materials

56

DOOR DETAILS





Built
to last.

At Timberlake, quality and craftsmanship are at our core. We believe cabinetry should be as smart as it is beautiful.

NEW
FINISH

Introducing Maple Cider

Ground your spaces with the warmth and subtle charm of our new Maple Cider finish. Its soft maple grain and delicate red undertones bring a welcoming, natural depth to any room. Perfect for kitchens, bathrooms, and beyond, Maple Cider adds timeless warmth that complements a wide range of design styles. Whether you're creating cozy retreats or functional spaces, this finish brings an organic, inviting touch to any home.



NEW HAVEN MAPLE CIDER



NEW HAVEN MAPLE CIDER



LAUSANNE MAPLE CIDER



THE MAPLE ADVANTAGE

The lasting appeal of maple finishes comes from their perfect mix of warmth, durability, and versatility. Maple Cider refines this classic with an inviting tone and subtle red undertones that add just the right amount of depth. Whether paired with crisp whites, deep charcoals, or natural textures, this finish complements a wide range of styles—offering a fresh yet familiar look that stands the test of time.

NEW
FINISH

Introducing Painted Oat

Add a sense of calm and balance with our new Painted Oat finish. This creamy taupe neutral works effortlessly in any room, from kitchens to bathrooms and beyond. With its subtle elegance, Painted Oat enhances a wide range of design styles, bringing warmth and sophistication to both modern and traditional spaces.



SONOMA PAINTED OAT



SONOMA PAINTED OAT



TREND WATCH: SOFT NEUTRALS

Soft neutrals are more than just a trend—they're becoming a staple in modern interiors. These light, creamy tones bring a sense of peace and elegance to any space, effortlessly fitting into both contemporary and traditional designs. Painted Oat ensures you're staying ahead of the curve, meeting the growing demand for timeless, sophisticated options that are actively sought after.

SONOMA MAPLE CIDER & PAINTED OAT





The Power of Pairing

Two-tone cabinetry is a powerful way to create striking designs, and with Painted Oat and Maple Cider, the possibilities are endless. Painted Oat's soft neutrality and Maple Cider's warmth pair effortlessly to create a timeless contrast that works across a variety of styles. The versatility of both finishes allows you to craft spaces that range from bold and contemporary to serene and refined. For a more modern look, pair Maple Cider with finishes like Sage or Black, or combine with Linen for a softer, more sophisticated vibe. Whether used together or with other finishes, Painted Oat and Maple Cider give you the flexibility to offer designs that truly stand out.

Modern Spaces

Crisp, clean, and chic

Stay ahead of the curve with modern designs that combine style and practicality. Sleek, modern lines give a fresh feel that beautifully combines form and function.



CRISP WHITE PAINT

Painted cabinetry in whites and greys gives the appearance of a fresh, open space.

NATURAL WOOD TONES

Natural wood is often a key element, either as the lead or an accent.

MODERN LINES

Cabinetry features like a flat-front drawer, called a slab drawer, pairs easily with modern style.

Less is More

Streamlined and uncomplicated, modern design uses open space and angles to create a strong, architectural look.

BOLD HARDWARE

Clean modern looks can easily be enhanced with bold hardware.

STACKED CABINETS

Stacked cabinets build architectural impact and crown moldings are generally simpler or may not be used at all.

GLASS DOORS

Consider glass doors or open shelves for the modern kitchen. For a modern farmhouse, doors with mullioned frames add charm.

New Haven

PORTFOLIO SELECT SERIES

Bring a casual upscale ease to a space with wide, Mission-style framing. Perfect for minimalist feel and airy appeal.

Features

CONSTRUCTION

Mortise and tenon
Recessed panel

DOOR DETAILS

Full overlay

DRAWER FRONT

Slab
Five-piece

SPECIES

Maple
Painted
Cherry

HARDWARE

Required



NEW HAVEN CHERRY AMBER & PAINTED MIST



Barnett

PORTFOLIO SERIES

We combined clean Shaker lines and a fresh painted look for an adaptable design suited for any space.

Features

CONSTRUCTION

Mortise and tenon
Recessed panel

DOOR DETAILS

Standard overlay

DRAWER FRONT

Slab

SPECIES

Maple
Painted
Duraform

HARDWARE

Recommended



LAUSANNE CHERRY CLOVE AND PAINTED LINEN



Lausanne

PORTFOLIO SERIES

Create a sleek look with refined allure with Lausanne's flat-panel design.

Features

CONSTRUCTION

Slab panel

DOOR DETAILS

Full overlay

DRAWER FRONT

Slab

SPECIES

Maple

Painted

Cherry

HARDWARE

Required



Sonoma

PORTFOLIO SERIES

The straight-line framing and open design of Sonoma makes it the very definition of Shaker design.

Features

CONSTRUCTION

Mortise and tenon
Recessed panel

DOOR DETAILS

Full overlay

DRAWER FRONT

Slab
Five-piece

SPECIES

Maple
Painted
Cherry
Duraform

HARDWARE

Required



SONOMA PAINTED STONE

Transitional Spaces

Modern flair with a classic touch

A little bit traditional, a little bit modern. Transitional designs pair modern woodwork detailing and classic designs for a relaxed, personal design.



CUSTOMIZED DETAILS

Woodworking details, such as beveling, mitered corners, and routing add unstated appeal.

SUBTLE BUT IMPACTFUL

The clean, sleek profile of a recessed panel provides subtle visual interest and flexibility when it comes to design.

ALL ABOUT SIGHTLINES

For a more modern vibe, create pristine lines with clean door designs.

Balanced Blend

Transitional design is the choice that adapts, blends, and pulls together pieces across styles, making it easy to customize.

PAINTED PAIRINGS

Pairing two shades of wood stain or paint can define different zones in a space.

ACCENTUATE ANY DESIGN

Adding a custom built-in to any space brings design cohesion and purpose.

ROOM ACCENTS

Transitional designs offer endless possibilities for room accents, like statement walls or eye-catching fireplaces.

Charleston

PORTFOLIO SELECT SERIES

The grooved lines of Charleston's recessed panel offers a composed, yet easy-going design.

Features

CONSTRUCTION

Mitered
Recessed panel

DOOR DETAILS

Full overlay

DRAWER FRONT

Slab
Five-piece

SPECIES

Maple
Painted
Cherry

HARDWARE

Required



CHARLESTON CHERRY CLOVE AND PAINTED NAVY



Maddox

PORTFOLIO SERIES

Elevating the Shaker style, Maddox offers mitered corners and beveled tiering.

Features

CONSTRUCTION

Mitered
Recessed panel

DOOR DETAILS

Full overlay

DRAWER FRONT

Slab
Five-piece

SPECIES

Maple
Painted

HARDWARE

Required



CORBAN MAPLE ALMOND



Corban

PORTFOLIO SERIES

Corban's slim-profile beading gives subtle detailing to the Shaker-style doors.

Features

CONSTRUCTION

Mortise and tenon
Recessed panel

DOOR DETAILS

Full overlay

DRAWER FRONT

Slab
Five-piece

SPECIES

Maple
Painted

HARDWARE

Required



Kinsdale

PORTFOLIO SERIES

Precise woodworking and thoughtful design make Kinsdale a refined choice for any space.

Features

CONSTRUCTION

Mitered
Recessed panel

DOOR DETAILS

Full overlay

DRAWER FRONT

Five-piece

SPECIES

Maple
Painted
Cherry
Duraform

HARDWARE

Required



KINSDALE CHERRY AMBER

Downing

PORTFOLIO SERIES

With multi-dimensional construction and detailing, Downing has broad appeal that evolves any design.

Features

CONSTRUCTION

Mitered

Recessed panel

DOOR DETAILS

Standard overlay

DRAWER FRONT

Five-piece

SPECIES

Duraform

HARDWARE

Recommended



DOWNING DURAFORM LINEN AND DURAFORM STONE



Fairfield

VALUE BUILT SERIES

Fairfield offers affordability without compromise. Quality, style, and value make it a smart design choice.

Features

CONSTRUCTION

Mortise and tenon
Recessed panel

DOOR DETAILS

Standard overlay

DRAWER FRONT

Decorative

SPECIES

Hardwood

HARDWARE

Recommended



Classic Spaces

All the details, all the time

Our classic approach to design is simple: put the focus on intricate, artisan woodworking. This creates warm and intimate spaces that can be easily elevated with the right hardware.



PERSONALIZED TOUCHES

Glass cabinets and open shelving showcase details and dinnerware.

SETTING THE MOOD

Furniture-like additions set the classic mood. Consider decorative legs on base cabinets for added detail.

DECORATIVE ACCENTS

Stacking multiple layers of complementary crown molding elevates the look.



In a Word, Timeless

Classic style is about polished indulgence. It begins with the richly sculpted cabinet doors and drawer fronts, and it continues with a palette of accents to complete the look.

STAINS AND PAINTS

Natural wood stains are a prime choice for classic style, or mix it up with a painted look.

EYE FOR DETAIL

Waterfall edges, beaded edges, beveling, miters, and grooving are trademarks of a classic styled door.

CUSTOM LOOKS

Custom, built-in furniture pieces, like this kitchen island, can be the centerpiece of any room.

Sierra Vista

PORTFOLIO SELECT SERIES

Furniture details and beveled corners makes Sierra Vista the epitome of classic style.

Features

CONSTRUCTION

Mitered
Raised panel

DOOR DETAILS

Full overlay

DRAWER FRONT

Five-piece

SPECIES

Maple
Painted
Cherry

HARDWARE

Required



SIERRA VISTA PAINTED BLACK



Windsor

PORTFOLIO SELECT SERIES

The intricately crafted, multi-tiered silhouette of Windsor features beveling and detailed woodworking.

Features

CONSTRUCTION

Mortise and tenon
Raised panel

DOOR DETAILS

Full overlay

DRAWER FRONT

Decorative
Five-piece

SPECIES

Maple
Painted
Cherry

HARDWARE

Required



BECKLEY MAPLE ALMOND



Beckley

PORTFOLIO SERIES

The crisp angles of Beckley's raised-panel door create a minimalist, versatile look.

Features

CONSTRUCTION

Mortise and tenon
Raised panel

DOOR DETAILS

Full overlay

DRAWER FRONT

Slab

SPECIES

Maple
Painted
Thermofoil

HARDWARE

Required



Canton

VALUE BUILT SERIES

Canton's bright white Thermofoil contoured profile makes it a beautiful, classic style choice.

Features

CONSTRUCTION

Laminated door
Raised Panel

DOOR DETAILS

Full overlay

DRAWER FRONT

Decorative

SPECIES

Thermofoil

HARDWARE

Required



CANTON THERMOFOIL WHITE

Unique, purpose-driven spaces

Incorporating custom built-ins, like dry bars or mudrooms, adds practical value and a touch of luxury. It's easy to turn unused spaces into a customized corner of the home.



CORBAN MAPLE ALMOND



SIERRA VISTA PAINTED BLACK





NEW HAVEN CHERRY AMBER AND PAINTED MIST





MADDOX PAINTED PEWTER GLAZE



Bathrooms are small spaces with huge potential

Think smart. Smart cabinetry maximizes storage without compromising on aesthetics, helping you transform any bathroom into a stylish, functional retreat.



SONOMA CHERRY CLOVE



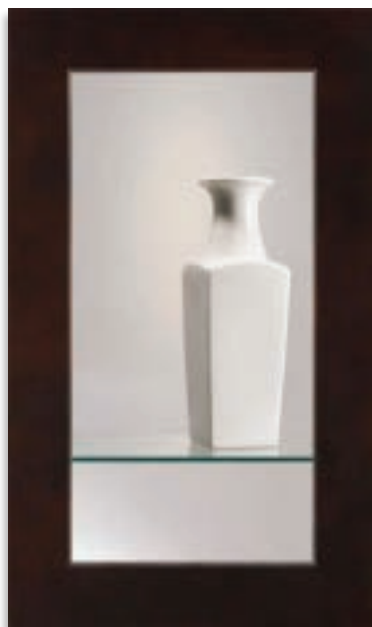




SIERRA VISTA PAINTED BLACK & PAINTED LINEN

Elevate any kitchen with glass doors

Glass doors create a feeling of spaciousness and provide a showcase for signature pieces.



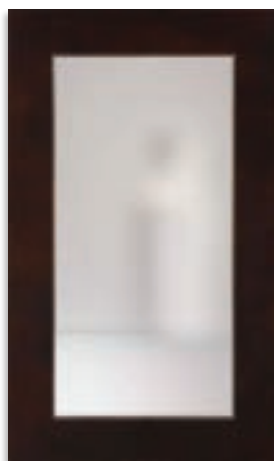
CLEAR GLASS



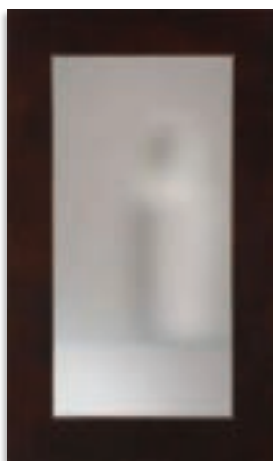
MEREDITH GLASS



DERBYSHIRE GLASS



FROSTED GLASS



FROSTED ASH GLASS



IMPRESSION GLASS



RIBBED GLASS





The finishing touches

Handles, pulls, and knobs can complement a look, or add a spark of surprise.

KNOBS



Antic Knob
Matte Black



Antic Knob
Modern Gold



Antic Knob
Polished Chrome



Antic Knob
Satin Nickel



Antic Knob
Vintage Nickel



Briolette Knob
Brushed Copper



Briolette Knob
Matte Black



Briolette Knob
Modern Gold



Briolette Knob
Polished Chrome



Briolette Knob
Satin Nickel



Button Knob
Matte Black



Button Knob
Satin Nickel



Button Knob
Verona Bronze



Classic Knob
Weathered Nickel



Classic Knob
Modern Gold



Classic Knob
Satin Nickel



Classic Knob
Verona Bronze



Classic Knob
Matte Black



Halo Knob
Brushed Copper



Halo Knob
Matte Black



Halo Knob
Modern Gold



Halo Knob
Polished Chrome



Halo Knob
Satin Nickel



Radiant Knob
Matte Black



Radiant Knob
Modern Gold



Radiant Knob
Satin Nickel



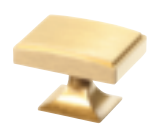
Radiant Knob
Verona Bronze



Radiant Knob
Weathered Nickel



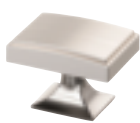
Rectangular Knob
Matte Black



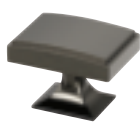
Rectangular Knob
Modern Gold



Rectangular Knob
Polished Chrome



Rectangular Knob
Satin Nickel



Rectangular Knob
Vintage Nickel



Ringed Knob
Matte Black



Ringed Knob
Satin Nickel



Ringed Knob
Verona Bronze

KNOBS CONTINUED



Stamped Knob
Matte Black



Stamped Knob
Modern Gold



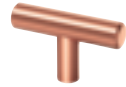
Stamped Knob
Satin Nickel



Stamped Knob
Verona Bronze



Stamped Knob
Weathered Nickel



T-Bar Knob
Brushed Copper



T-Bar Knob
Matte Black



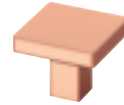
T-Bar Knob
Modern Gold



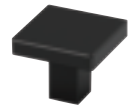
T-Bar Knob
Polished Chrome



T-Bar Knob
Satin Nickel



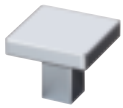
Tempo Knob
Brushed Copper



Tempo Knob
Matte Black



Tempo Knob
Modern Gold



Tempo Knob
Polished Chrome



Tempo Knob
Satin Nickel



Toggle Knob
Matte Black



Toggle Knob
Satin Nickel



Toggle Knob
Verona Bronze



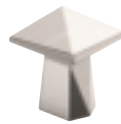
Trillion Knob
Matte Black



Trillion Knob
Modern Gold



Trillion Knob
Polished Chrome



Trillion Knob
Satin Nickel



Trillion Knob
Vintage Nickel

PULLS



Antic Pull
Matte Black



Antic Pull
Modern Gold



Antic Pull
Polished Chrome



Antic Pull
Satin Nickel



Antic Pull
Vintage Nickel



Beaded Pull
Satin Nickel



Beaded Pull
Verona Bronze



Beaded Pull
Weathered Nickel



Beaded Pull
Matte Black



Beaded Pull
Modern Gold



Bow Pull 6 3/16"
Brushed Copper



Bow Pull 6 3/16"
Matte Black



Bow Pull 6 3/16"
Modern Gold



Bow Pull 6 3/16"
Polished Chrome



Bow Pull 6 3/16"
Satin Nickel



Bow Pull 7 13/16"
Brushed Copper



Bow Pull 7 13/16"
Matte Black



Bow Pull 7 13/16"
Modern Gold

PULLS CONTINUED



Bow Pull 7 13/16"
Polished Chrome



Bow Pull 7 13/16"
Satin Nickel



Briolette Pull
Brushed Copper



Briolette Pull
Matte Black



Briolette Pull
Modern Gold



Briolette Pull
Polished Chrome



Briolette Pull
Satin Nickel



Cup Pull
Matte Black



Cup Pull
Modern Gold



Cup Pull
Satin Nickel



Cup Pull
Verona Bronze



Cup Pull
Weathered Nickel



Classic Pull
Matte Black



Classic Pull
Satin Nickel



Classic Pull
Verona Bronze



Radiant Pull
Matte Black



Radiant Pull
Modern Gold



Radiant Pull
Satin Nickel



Radiant Pull
Verona Bronze



Radiant Pull
Weathered Nickel



Rectangular Pull
Matte Black



Rectangular Pull
Modern Gold



Rectangular Pull
Polished Chrome



Rectangular Pull
Satin Nickel



Rectangular Pull
Vintage Nickel



Ringed Arch Pull
Matte Black



Ringed Arch Pull
Satin Nickel



Ringed Arch Pull
Verona Bronze



Marquise Pull 6 7/8"
Brushed Copper



Marquise Pull 6 7/8"
Matte Black



Marquise Pull 6 7/8"
Modern Gold



Marquise Pull 6 7/8"
Polished Chrome



Marquise Pull 6 7/8"
Satin Nickel



Marquise Pull 5 9/16"
Brushed Copper



Marquise Pull 5 9/16"
Matte Black



Marquise Pull 5 9/16"
Modern Gold



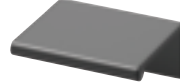
Marquise Pull 5 9/16"
Polished Chrome



Marquise Pull 5 9/16"
Satin Nickel



Tab Pull 1 3/4"
Brushed Copper



Tab Pull 1 3/4"
Matte Black



Tab Pull 1 3/4"
Modern Gold



Tab Pull 1 3/4"
Polished Chrome

PULLS CONTINUED



Tab Pull 1 3/4"
Satin Nickel



Tab Pull 3"
Brushed Copper



Tab Pull 3"
Matte Black



Tab Pull 3"
Modern Gold



Tab Pull 3"
Polished Chrome



Tab Pull 3"
Satin Nickel



Tab Pull 6"
Brushed Copper



Tab Pull 6"
Matte Black



Tab Pull 6"
Modern Gold



Tab Pull 6"
Polished Chrome



Tab Pull 6"
Satin Nickel



T-Bar Pull 12 7/16"
Brushed Copper



T-Bar Pull 12 7/16"
Matte Black



T-Bar Pull 12 7/16"
Modern Gold



T-Bar Pull 12 7/16"
Polished Chrome



T-Bar Pull 12 7/16"
Satin Nickel



T-Bar Pull 5 5/16"
Brushed Copper



T-Bar Pull 5 5/16"
Matte Black



T-Bar Pull 5 5/16"
Modern Gold



T-Bar Pull 5 5/16"
Polished Chrome



T-Bar Pull 5 5/16"
Satin Nickel



T-Bar Pull 8 5/8"
Brushed Copper



T-Bar Pull 8 5/8"
Matte Black



T-Bar Pull 8 5/8"
Modern Gold



T-Bar Pull 8 5/8"
Polished Chrome



T-Bar Pull 8 5/8"
Satin Nickel



Tempo Pull
Brushed Copper



Tempo Pull
Matte Black



Tempo Pull
Modern Gold



Tempo Pull
Polished Chrome



Tempo Pull
Satin Nickel



Trillion Pull
Matte Black



Trillion Pull
Modern Gold



Trillion Pull
Polished Chrome



Trillion Pull
Satin Nickel



Trillion Pull
Vintage Nickel



Twisted Crescent
Matte Black



Twisted Crescent
Satin Nickel



Twisted Crescent
Verona Bronze



Take a closer look!
View more details of our hardware.

Details make all the difference

From modifications to decorative accents, unique touches like duo-tone cabinetry and glass doors add convenience and beauty to every space.

01 TWO TONE CABINETS

Provide visual interest and define areas with two cabinet colors.

06 GLASS DOOR DETAILS

Glass door inserts display dinnerware and add airiness to the room.



MADDOX PAINTED LINEN

02 PRACTICAL STORAGE

Drawer base cabinets provide ample storage at an arm's reach.

03 CENTER THE STOVE

A stylish range hood is the centerpiece of a great kitchen, completing any design.

04 DIMENSION AND DETAIL

Add crown molding for detail and dimension that completely transforms blank spaces.

05 BEAUTIFULLY FURNISHED

Decorative legs on islands add a designer-inspired touch.

07 BUILT-IN LOOK

An increased-depth cabinet over the fridge gives a built-in look.

08 GET A FURNITURE LOOK

Use decorative doors to finish off a run of cabinets with a furniture look.

09 CREATE TASK ZONES

Under-cabinet task lighting designates food prep zones.

10 ALL THE DETAILS

Hardware adds a touch of detail to any cabinet door design.



MADDOX PAINTED LINEN AND PAINTED NAVY

Eye-catching and organized

Functional additions give kitchens more storage and work space by reducing counter and drawer clutter.

Kitchen Essentials

01 CUTLERY DIVIDER

Simple & elegant access to everyday necessities.

02 DEEP ROLL OUT TRAY

Keep everything at an arm's reach.

03 PULL OUT WASTEBASKET

The easy way to keep trash out of sight.

04 BASE POT & PAN ORGANIZER

Heavy duty and convenient access to cookware.

05 BASE PULL OUT UTENSIL STORAGE

Unclutter your countertops.

06 BASE PULL OUT

Creative multipurpose storage solution.

07 BASE ADJUSTABLE DRAWER

Designed for a variety of cooking & storage needs.





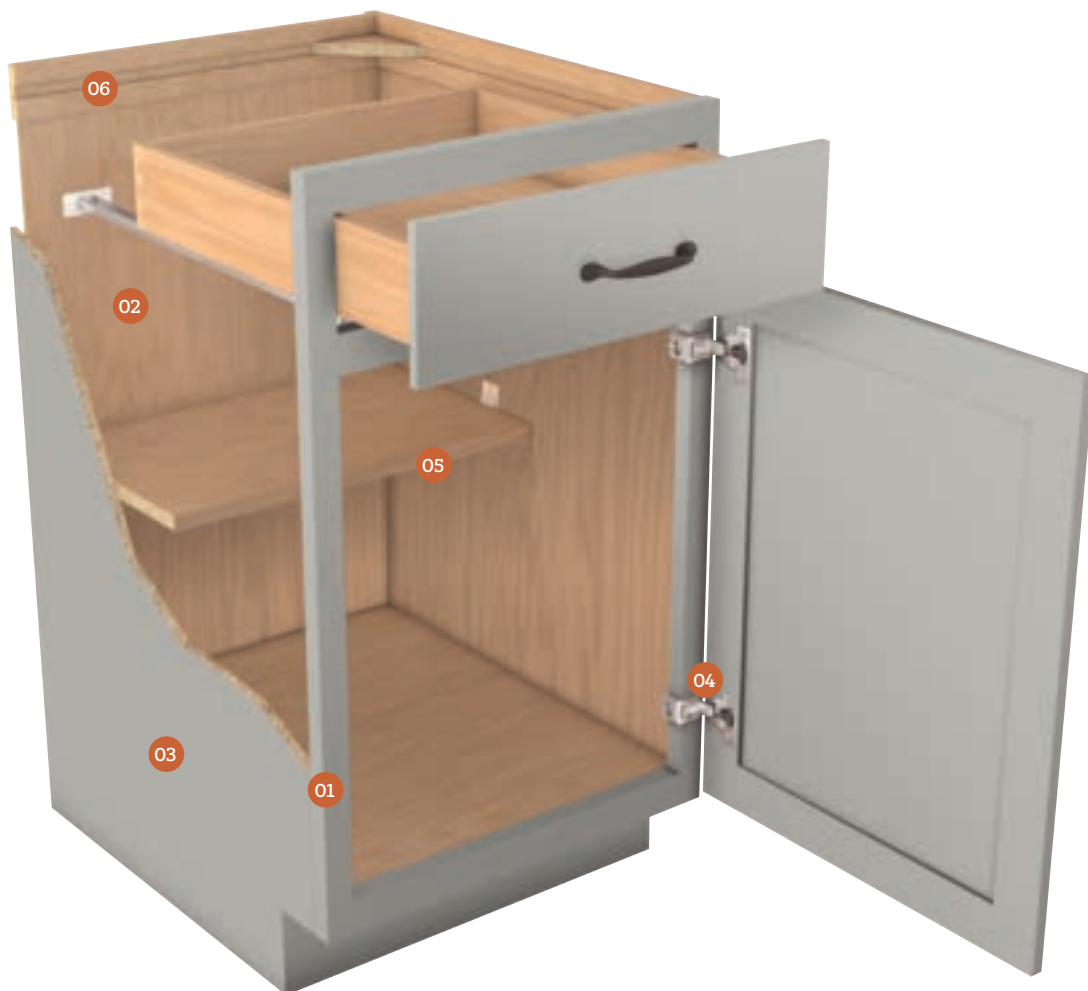
An Inside Look



Quality comes standard on all Timberlake cabinetry. Our three series allow you to choose the perfect combination of features and options for your needs and budget, and they're all backed by a warranty that covers cabinets and accessories against defects in materials and workmanship.

Cabinet Standard Features

These features are found on all series.



01 3/4" X 15/8"
Hardwood
Face Frame

02 Captured
Back
Construction

03 12" Thick
Engineered
Wood
Cabinet Sides

04 Adjustable
Hidden
Hinges

05 Adjustable
Shelves

06 Hardwood
Hanging Rail

Features by Cabinet Series

	Portfolio SELECT	Portfolio	Value BUILT
CABINET CONSTRUCTION			
Captured Back Construction	■	■	■
½" Thick Engineered Wood Cabinet Sides	■	■	■
BASE CABINET DRAWERS			
21" Deep, ⅝" Thick Premium Dovetail Hardwood Drawers	■	OPTIONAL	
21" Deep Drawers, ½" Thick Engineered Wood		■	
18" Deep Drawers, ½" Thick Engineered Wood			■
DRAWER GLIDES			
CushionClose® Glides	■	OPTIONAL	
Side-Mounted Drawer Glides		■	■
DOORS			
Solid Wood Doors*	■		
Veneer Doors*		■	■
Wrapped and Laminated Doors	■	■	■
HINGES			
CushionClose® Hinges	■	OPTIONAL	
Adjustable Hidden Hinges		■	■
SHELVING			
Full Depth Shelf Option	OPTIONAL	OPTIONAL	OPTIONAL
¾" Thick Shelving	■	■	
½" Thick Shelving			■
Adjustable Shelves	■	■	■
WARRANTY			
5-Year Limited Warranty	■	■	
2-Year Limited Warranty			■
OPTIONS			
Furniture Ends	■	■	
All Plywood Construction	■	■	
Plywood Ends	■	■	
Aluminum Frame Doors	■	■	
Recessed Toe Kick	■	■	■
Reduced/Increased Depths	■	■	■
Decorative Glass Doors	■	■	■
Matching Interior	■	■	■
Void Door	■	■	■
Cabinet Front Only	■	■	■

* Painted doors feature engineered wood materials for a superior finish.

IT'S IMPORTANT TO KNOW WHAT TO EXPECT.

No two pieces of wood are exactly alike. Wood variations make fine wood cabinetry distinctly beautiful.

Natural Factors

The following characteristics are natural and are not considered defects:

- Naturally occurring color, grain, and texture differences
- Color deviations, even within the same section of wood
- Differences between open and closed-grain areas
- Visible mineral streaks

Just as wood naturally expands and contracts, so do door joints. Periodically, you may see hairline cracks in the finish surface at the joints. These are normal and do not affect the integrity of the door.



Care & Cleaning

Your cabinetry is extremely resistant to stains and surface damage that can be caused by common household items. However, to further protect the original factory finish:

- Wipe up spills immediately using a clean cloth and mild soaps
- Dust your cabinets periodically using a soft, slightly dampened, lint-free cloth
- Read all cabinet care guidelines and cleaning product instructions carefully

Environmental Factors

Cabinetry added at a later date may not match the original cabinets installed and samples may no longer have a true color representation. This may be due to:

- Exposure to sunlight, smoke, and chemicals
- Change in door samples or displays due to age

Because of environmental factors, Timberlake is not responsible for texture differences or color and wood grain variations in materials used in your cabinets.

The Materials

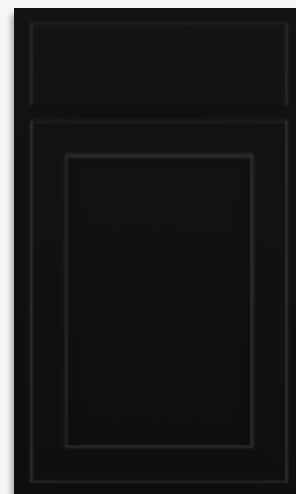
01



02



03



04



05



06



01 CHERRY

Cherry, a closed-grain, uniform-texture hardwood, shows distinctive curly figures and pin knots. Natural pale-yellow sapwood to reddish-brown heartwood darkens over time. It's attractive in a deep stain.

02 MAPLE

Maple is an extremely hard wood with a fine, even texture. Color can be light to cream-colored. Its uniform straight grain may show wavy, bird's eye, or burl graining. Popular for its durability and luster.

03 PAINTED

Painted finishes combine hardwoods and engineered materials for stability, consistency, and durability, with minimal grain visibility. Joint lines may appear due to the wood's natural expansion and contraction.

04 HARDWOOD

Hardwoods include dense-structured maple, oak, birch, cherry, hickory, poplar, and ash. Color ranges from light blonde to dark reddish-brown. Variations of graining, color, and mineral streaks are natural.






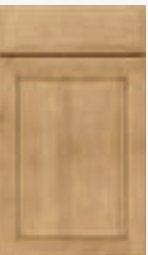
05 THERMOFOIL

Thermofoil is a process that bonds a thick vinyl film to a warp-resistant engineered wood core. Because color is throughout the film, the surface is durable, easy-clean, and resistant to chipping and cracking.

06 DURAFORM




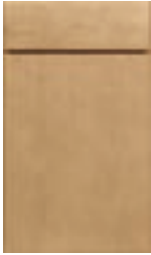



Duraform uses advanced manufacturing to bond foils and coatings to medium density fiberboard, high-density fiberboard, and similar materials for exceptional stability, consistency, and durability.


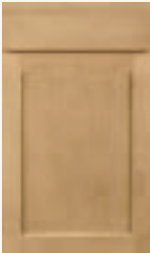




Door Styles

Door Styles	Sierra Vista		Charleston		New Haven		New Haven		Windsor		Windsor	
												
	Full Overlay		Full Overlay		Full Overlay		Full Overlay		Full Overlay		Full Overlay	
	Raised		Recessed		Recessed		Recessed		Raised		Raised	
	5-Piece		5-Piece		5-Piece		Slab		5-Piece		Decorative	
	SPECIES + FINISHES	MAPLE	RYE	RYE	RYE	RYE	RYE	RYE	RYE	RYE	RYE	RYE
			ALMOND	ALMOND	ALMOND	ALMOND	ALMOND	ALMOND	ALMOND	ALMOND	ALMOND	ALMOND
			LATTE	LATTE	LATTE	LATTE	LATTE	LATTE	LATTE	LATTE	LATTE	LATTE
			CIDER	CIDER	CIDER	CIDER	CIDER	CIDER	CIDER	CIDER	CIDER	CIDER
			TRUFFLE	TRUFFLE	TRUFFLE	TRUFFLE	TRUFFLE	TRUFFLE	TRUFFLE	TRUFFLE	TRUFFLE	TRUFFLE
SLATE			SLATE	SLATE	SLATE	SLATE	SLATE	SLATE	SLATE	SLATE	SLATE	
CHERRY	AMBER	AMBER	AMBER	AMBER	AMBER	AMBER	AMBER	AMBER	AMBER	AMBER	AMBER	
	CLOVE	CLOVE	CLOVE	CLOVE	CLOVE	CLOVE	CLOVE	CLOVE	CLOVE	CLOVE	CLOVE	
PAINTED*	HARDWOOD	LINEN	LINEN	LINEN	LINEN	LINEN	LINEN	LINEN	LINEN	LINEN	LINEN	LINEN
		PEWTER GLAZE	PEWTER GLAZE			PEWTER GLAZE	PEWTER GLAZE	PEWTER GLAZE	PEWTER GLAZE	PEWTER GLAZE	PEWTER GLAZE	PEWTER GLAZE
		VANILLA	VANILLA	VANILLA	VANILLA	VANILLA	VANILLA	VANILLA	VANILLA	VANILLA	VANILLA	VANILLA
		BISCOTTI GLAZE	BISCOTTI GLAZE			BISCOTTI GLAZE	BISCOTTI GLAZE	BISCOTTI GLAZE	BISCOTTI GLAZE	BISCOTTI GLAZE	BISCOTTI GLAZE	BISCOTTI GLAZE
		HARBOR	HARBOR	HARBOR	HARBOR	HARBOR	HARBOR	HARBOR	HARBOR	HARBOR	HARBOR	HARBOR
		EMBER GLAZE	EMBER GLAZE			EMBER GLAZE	EMBER GLAZE	EMBER GLAZE	EMBER GLAZE	EMBER GLAZE	EMBER GLAZE	EMBER GLAZE
		OAT	OAT	OAT	OAT	OAT	OAT	OAT	OAT	OAT	OAT	OAT
		STONE	STONE	STONE	STONE	STONE	STONE	STONE	STONE	STONE	STONE	STONE
		BOULDER	BOULDER	BOULDER	BOULDER	BOULDER	BOULDER	BOULDER	BOULDER	BOULDER	BOULDER	BOULDER
		SAGE	SAGE	SAGE	SAGE	SAGE	SAGE	SAGE	SAGE	SAGE	SAGE	SAGE
		MIST	MIST	MIST	MIST	MIST	MIST	MIST	MIST	MIST	MIST	MIST
		NAVY	NAVY	NAVY	NAVY	NAVY	NAVY	NAVY	NAVY	NAVY	NAVY	NAVY
		BLACK	BLACK	BLACK	BLACK	BLACK	BLACK	BLACK	BLACK	BLACK	BLACK	BLACK
DURAFORM**												
THERMOFOL												

* Features an engineered wood center panel for a superior finish excluding Maddox, New Haven, Lausanne, Beckley & Barnett feature all MDF Construction.

** Duraform: Breeze cabinet exterior is finished in Linen; Drift cabinet exterior is finished in Harbor

Beckley	Maddox	Maddox	Lausanne	Kinsdale	Corban	Corban
						
Full Overlay	Full Overlay	Full Overlay	Full Overlay	Full Overlay	Full Overlay	Full Overlay
Raised	Recessed	Recessed	Slab	Recessed	Recessed	Recessed
Slab	5-Piece	Slab	Slab	5-Piece	5-Piece	Slab
<div>RYE</div> <div>ALMOND</div> <div>LATTE</div> <div>CIDER</div> <div>TRUFFLE</div> <div>SLATE</div>	<div>RYE</div> <div>ALMOND</div> <div>LATTE</div> <div>CIDER</div> <div>TRUFFLE</div> <div>SLATE</div>	<div>RYE</div> <div>ALMOND</div> <div>LATTE</div> <div>CIDER</div> <div>TRUFFLE</div> <div>SLATE</div>	<div>RYE</div> <div>ALMOND</div> <div>LATTE</div> <div>CIDER</div> <div>TRUFFLE</div> <div>SLATE</div> <div>AMBER</div> <div>CLOVE</div>	<div>RYE</div> <div>ALMOND</div> <div>LATTE</div> <div>CIDER</div> <div>TRUFFLE</div> <div>SLATE</div> <div>AMBER</div> <div>CLOVE</div>	<div>RYE</div> <div>ALMOND</div> <div>LATTE</div> <div>CIDER</div> <div>TRUFFLE</div> <div>SLATE</div>	<div>RYE</div> <div>ALMOND</div> <div>LATTE</div> <div>CIDER</div> <div>TRUFFLE</div> <div>SLATE</div>
<div>LINEN</div> <div>PEWTER GLAZE</div> <div>VANILLA</div> <div>BISCOTTI GLAZE</div> <div>HARBOR</div> <div>EMBER GLAZE</div> <div>OAT</div> <div>STONE</div> <div>BOULDER</div> <div>SAGE</div> <div>MIST</div> <div>NAVY</div> <div>BLACK</div>	<div>LINEN</div> <div>PEWTER GLAZE</div> <div>VANILLA</div> <div>BISCOTTI GLAZE</div> <div>HARBOR</div> <div>EMBER GLAZE</div> <div>OAT</div> <div>STONE</div> <div>BOULDER</div> <div>SAGE</div> <div>MIST</div> <div>NAVY</div> <div>BLACK</div>	<div>LINEN</div> <div>PEWTER GLAZE</div> <div>VANILLA</div> <div>BISCOTTI GLAZE</div> <div>HARBOR</div> <div>EMBER GLAZE</div> <div>OAT</div> <div>STONE</div> <div>BOULDER</div> <div>SAGE</div> <div>MIST</div> <div>NAVY</div> <div>BLACK</div>	<div>LINEN</div> <div>VANILLA</div> <div>HARBOR</div> <div>OAT</div> <div>STONE</div> <div>BOULDER</div> <div>SAGE</div> <div>MIST</div> <div>NAVY</div> <div>BLACK</div>	<div>LINEN</div> <div>PEWTER GLAZE</div> <div>VANILLA</div> <div>BISCOTTI GLAZE</div> <div>HARBOR</div> <div>EMBER GLAZE</div> <div>OAT</div> <div>STONE</div> <div>BOULDER</div> <div>SAGE</div> <div>MIST</div> <div>NAVY</div> <div>BLACK</div>	<div>LINEN</div> <div>PEWTER GLAZE</div> <div>VANILLA</div> <div>BISCOTTI GLAZE</div> <div>HARBOR</div> <div>EMBER GLAZE</div> <div>OAT</div> <div>STONE</div> <div>BOULDER</div> <div>SAGE</div> <div>MIST</div> <div>NAVY</div> <div>BLACK</div>	<div>LINEN</div> <div>PEWTER GLAZE</div> <div>VANILLA</div> <div>BISCOTTI GLAZE</div> <div>HARBOR</div> <div>EMBER GLAZE</div> <div>OAT</div> <div>STONE</div> <div>BOULDER</div> <div>SAGE</div> <div>MIST</div> <div>NAVY</div> <div>BLACK</div>
<div>WHITE</div>						

Sonoma	Sonoma	Downing	Barnett	Canton	Fairfield	
						
Full Overlay	Full Overlay	Standard Overlay	Standard Overlay	Full Overlay	Standard Overlay	
Recessed	Recessed	Recessed	Recessed	Raised	Recessed	
5-Piece	Slab	5-Piece	Slab	Decorative	Decorative	
<div>RYE</div> <div>ALMOND</div> <div>LATTE</div> <div>CIDER</div> <div>TRUFFLE</div> <div>SLATE</div>	<div>RYE</div> <div>ALMOND</div> <div>LATTE</div> <div>CIDER</div> <div>TRUFFLE</div> <div>SLATE</div>		<div>RYE</div> <div>ALMOND</div> <div>LATTE</div> <div>CIDER</div> <div>TRUFFLE</div> <div>SLATE</div>			
<div>AMBER</div> <div>CLOVE</div>	<div>AMBER</div> <div>CLOVE</div>					
<div>LINEN</div> <div>VANILLA</div> <div>HARBOR</div> <div>OAT</div> <div>STONE</div> <div>BOULDER</div> <div>SAGE</div> <div>MIST</div> <div>NAVY</div> <div>BLACK</div>	<div>LINEN</div> <div>VANILLA</div> <div>HARBOR</div> <div>OAT</div> <div>STONE</div> <div>BOULDER</div> <div>SAGE</div> <div>MIST</div> <div>NAVY</div> <div>BLACK</div>		<div>LINEN</div> <div>VANILLA</div> <div>HARBOR</div> <div>OAT</div> <div>STONE</div> <div>BOULDER</div> <div>SAGE</div> <div>MIST</div> <div>NAVY</div> <div>BLACK</div>			
					<div>RYE</div> <div>TRUFFLE</div>	
<div>LINEN</div> <div>HARBOR</div> <div>STONE</div> <div>ESPRESSO</div>	<div>LINEN</div> <div>HARBOR</div> <div>STONE</div> <div>ESPRESSO</div>	<div>LINEN</div> <div>HARBOR</div> <div>STONE</div> <div>ESPRESSO</div>	<div>LINEN</div> <div>HARBOR</div> <div>STONE</div> <div>ESPRESSO</div>			
				<div>WHITE</div>		



「 For more
inspiration and
detailed product
information visit
Timberlake.com.



Scan now to visit
Timberlake.com!



P.O. Box 1980
Winchester, Virginia 22604
timberlake.com

©2025 American Woodmark Corporation
5/25 TBL98767



Photography is for illustration purposes only.
Actual colors may vary slightly due to the printing
process. For actual color selections, please
consult your Timberlake distributor or builder.