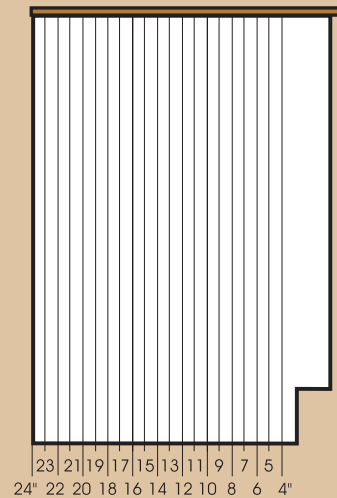
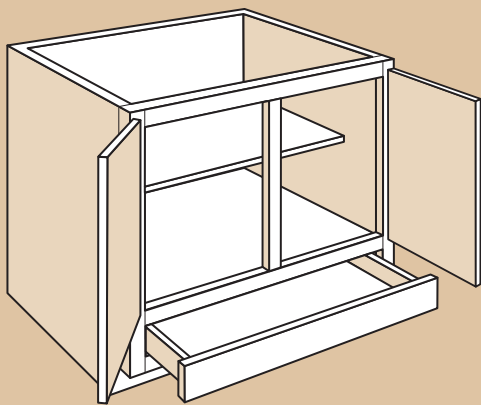
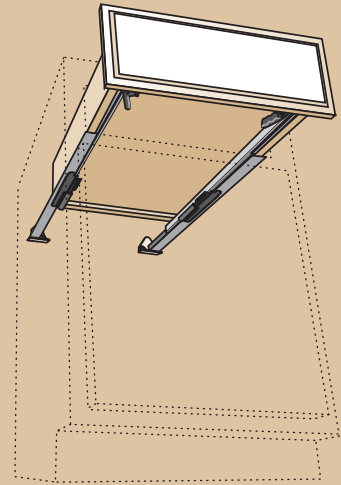
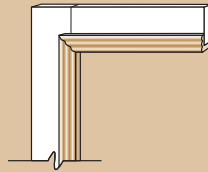
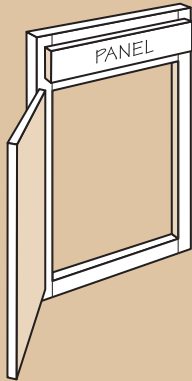


# Construction Options



## Construction Options Legend

Icons used in this guide are shown below and indicate which construction options are available for a particular product.

<b>APC</b>	All Plywood Construction Option
<b>CFO</b>	Cabinet Front Only Option
<b>ID</b>	Increased Depth Cabinet Option
<b>IF</b>	Inverted Frame Cabinet Option
<b>MI</b>	Matching Interior Cabinet Option
<b>PVS</b>	Plywood Veneered Sides Option
<b>RD</b>	Reduced Depth Cabinet Option
<b>VDO</b>	Void Door Cabinet Option

### Examples:

- When a bullet ● is included within the icon, it indicates the construction option is available for ALL SKUs in the product box unless otherwise noted.

In this product box, all SKUs (B36, B39, B42 and B48) are available with **All Plywood Construction Option**, Cabinet Front Only Option, Inverted Frame Cabinet Option, Plywood Veneered Sides Option and Reduced Depth Cabinet Option.

Base Cabinet 2 Doors, 2 Drawers	
B36	● APC
B39	● CFO
B42	● IF
B48	● PVS
	● RD

- When a square ■ is included within the icon and next to the SKU, it indicates that the construction option is ONLY available for that specific SKU.

In this product box, only the W1818 and W2118 are available with Void Door Cabinet Option.

Wall Cabinet 18" High, 1 Door	
■ W1818	● APC
■ W2118	● CFO
	● ID
	● MI
	● PVS
	● RD
	■ VDO
W1818 MFD	
W2118 MFD	
W1818 OFD	
W2118 OFD	

- When nothing appears within the icon, it indicates the construction option is NOT available for any items within the SKU product box.

In this product box, none of the SKUs are available with Increased Depth Cabinet Option.

Refrigerator Wall 18" High x 24" Deep	
W3018 X 24 DP	● APC
W3318 X 24 DP	● CFO
W3618 X 24 DP	ID
W3918 X 24 DP	● MI
	● PVS
	● RD
	● VDO

## Premium Finish Cabinet Option

Our premium finish colors accentuate the detailing and textures of the cabinetry.

**Cherry Chocolate Glaze** – Available on all Portfolio Select and Portfolio Cherry door styles.

Deep brown glaze settles into recesses, corners and grooves of warm, Spice finished Cherry to add definition and a lustrous deep color.

**Maple Auburn Glaze** – Available on all Portfolio Select and Portfolio Maple door styles.

Deep brown glaze over a Cognac finish settles into recesses, corners, and grooves to create a dramatic contrast between the glazed and unglazed surfaces.

**Maple Butterscotch Glaze** – Available on **Sierra Vista** and **Rushmore Maple**.

A lightly toasted brown glaze is wiped over a warm-white painted surface to accent the grooves, corners and recesses for a distinctive patina.

**Maple Coffee Glaze** – Available on all Portfolio Select and Portfolio Maple door styles.

Deep brown glaze over a Honey finish settles into recesses, corners and grooves to create a dramatic contrast.

**Maple Cream Glaze** – Available on **Sierra Vista** and **Rushmore Maple**.

A light, Cream glaze is wiped over a warm-white painted surface to create this clean, attractive patina.

**Maple Linen** – Available on **Sierra Vista** and **Rushmore Maple**.

Luxurious white painted finish on Maple hardwood accentuates crisp lines and rich detail with an inviting texture.

**Maple Mocha Glaze** – Available on all Portfolio Select and Portfolio Maple door styles.

Dark brown glaze settles into recesses, corners and grooves of warm, Spice finished Maple to add definition and a rich patina.

**When ordering a Premium Finish, Timberlake Cabinetry strongly recommends ordering matching end panels (WEP, BEP, TEP), the All Plywood Construction Option or the Plywood Veneered Sides Option for all exposed cabinet sides. This will ensure the best possible look for your Premium Finish cabinetry.**

## Black Accessory Finish

Accessories with the Black finish are solid hardwood painted black unless otherwise noted.

**Ordering example: FB3X3 ROSETTE BLACK**

## All Plywood Construction Option

● APC

All Plywood Construction Option includes:

- ½" plywood sides, floors and cabinet tops
- ¾" plywood shelves with edge banding
- ⅛" plywood captured back
- ½" plywood inset toe kick
- ½" plywood corner blocks

### Notes:

- Available for Portfolio Select and Portfolio wood door styles only.
- Portfolio door styles require Dovetail Full Access Drawer Option upgrade.
- Not available for Value-Built by Timberlake door styles.
- Available for individual cabinets or entire kitchen.
- All wood door styles feature standard interior sides of natural woodgrain laminate.
- Cannot be ordered with Plywood Veneered Sides Option  PVS.
- Available with Matching Interior Option. Please refer to the product SKU box for details  MI.
- **When matching interior is desired, the Matching Interior Cabinet Option must be selected for all door styles except Maple Natural.**
- Matching Interior cabinetry features ¾" veneered engineered wood shelving.
- Toe Kick support blocks are not plywood.
- Recommended for cabinets ordered with the Premium Finish Cabinet Option.

## Plywood Veneered Sides Option

● PVS

PVS construction includes:

- ½" plywood cabinet sides


### Notes:

- Not available for Value-Built by Timberlake door styles.
- Exterior sides feature furniture grade veneer finished to match specific cabinet color.
- Available for individual cabinets or entire kitchen.
- All wood door styles feature standard interior sides of natural woodgrain laminate.
- White Thermo Foil door styles feature standard interior sides of painted veneer.
- Available with Matching Interior Option. Please refer to the product SKU box for details  MI.
- **When matching interior is desired, the Matching Interior Cabinet Option must be selected for all door styles except White Thermo Foil and Maple Natural.**
- Recommended for cabinets ordered with the Premium Finish Cabinet Option.

Construction Option	Portfolio Select Portfolio Value-Built by Timberlake	Portfolio Select Portfolio	Portfolio Select Portfolio
	Standard Construction	Plywood Veneered Sides Option (PVS)	All Plywood Construction Option (APC)
<b>Cabinet Sides</b>	½" Engineered Wood with TuffTech Finish	½" Plywood Exterior with BeautyGuard Finish	½" Plywood Exterior with BeautyGuard Finish
<b>Cabinet Floor</b>	½" Engineered Wood	½" Engineered Wood	½" Plywood
<b>Cabinet Top (Wall Cabinets Only)</b>	½" Engineered Wood	½" Engineered Wood	½" Plywood
<b>Cabinet Back</b>	⅛" Hardboard Substrate captured	⅛" Hardboard Substrate captured	⅛" Plywood captured
<b>Face Frame</b>	Double Doweled ¾" x 1⅝" Hardwood	Double Doweled ¾" x 1⅝" Hardwood	Double Doweled ¾" x 1⅝" Hardwood
<b>Inset Toe Kick</b>	½" Engineered Wood	½" Engineered Wood	½" Plywood
<b>Corner Blocks</b>	½" Engineered Wood	½" Engineered Wood	½" Plywood
<b>Shelves</b>	¾" Engineered Wood with Edge Banding	¾" Engineered Wood with Edge Banding	¾" Plywood with Edge Banding <b>Matching Interior Cabinetry features ¾" veneered engineered wood shelving</b>
<b>Wall Cabinet Hanging Rails</b>	½" Engineered Wood Top and Bottom Rails	½" Engineered Wood Top and Bottom Rails	½" Plywood Top and Bottom Rails
<b>Base Cabinet Hanging Rails</b>	¾" Hardwood Top Rail ½" Engineered Wood Bottom Rail	¾" Hardwood Top Rail ½" Engineered Wood Bottom Rail	¾" Hardwood Top Rail ½" Plywood Bottom Rail
<b>Wood Door Styles Standard Interior</b>	Natural Woodgrain TuffTech Finish	Natural Woodgrain TuffTech Finish Tops, Bottoms, Shelves, and Back with Natural Woodgrain Laminate Side Panels	Natural Woodgrain Laminate
<b>White Thermo Foil Door Styles Standard Interior</b>	White Melamine	White Melamine Tops, Bottoms, Shelves, and Back with White Painted Veneer Side Panels	Not available for White Thermo Foil door styles
<b>Matching Interior Cabinet Option</b>	Natural Woodgrain TuffTech Finish (Standard for Maple Natural, White Thermo Foil)	Natural Woodgrain TuffTech Finish Tops, Bottoms, Shelves, and Back with BeautyGuard Finish Side Panels (Standard for Maple Natural, White Thermo Foil)	Veneer with BeautyGuard Finish (N/A Maple Natural and White Thermo Foil door styles)

## Increased Depth Cabinet Option

● ID

The Increased Depth Cabinet Option is available for most wall cabinets up to 36" wide (see individual cabinet specifications for  icon verifying this option availability) and all Bookshelves (excluding Bookcases). Standard depth for wall cabinets and bookshelves is 12". By offering Increased Depth in 1" increments, up to 24" deep, Timberlake Cabinetry provides unsurpassed design flexibility.

Orders specifying Increased Depth Option must show the total cabinet depth.

Example: Cabinet: W1530

Option: ID-14 (ID – Increase to 14" Deep)

### Installation Notes:

#### Wall Cabinets:


- Increased Depth wall cabinets up to and including 18" deep can be mounted using standard installation procedures.
- Wall cabinets increased to more than 18" deep must be stacked, floor mounted or installed over a refrigerator.
- All Increased Depth cabinets must be securely attached in one of the following combinations: to studs in back wall and both sides OR to studs in back wall, one side and top (e.g. two adjacent cabinets or one adjacent cabinet and a wall).

#### Peninsula Wall (PW) and Blind Peninsula Wall (BLPW) Cabinets:

- Increased Depth PW and BLPW cabinets up to 15" deep may be mounted at ceiling height using standard installation procedures.
- PW and BLPW cabinets increased to more than 15" deep must be stacked or floor mounted.
- When mounting cabinet at ceiling height, the cabinet must be securely attached to the ceiling rafters and to at least one other properly mounted cabinet or studs in wall.
- Additional 2" x 4" bracing may be required above ceiling if cabinets are not located directly below a rafter.
- Mount cabinet to the ceiling using mounting screws of sufficient length to go through ceiling treatment and into the rafter at least 1". Screws must be installed at both front and back of cabinet on 16" centers (maximum span), with at least four screws per cabinet.

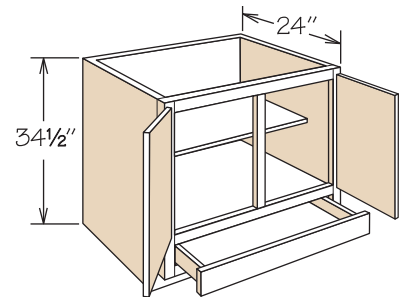
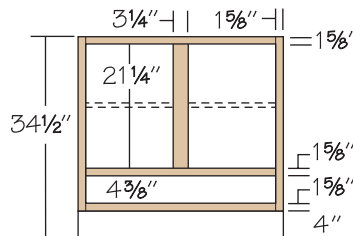
## Inverted Frame Cabinet Option

● IF

The Inverted Frame Cabinet Option is available for most Standard Base Cabinets and Base Cabinets with Accessories (see individual cabinet specifications for icon  verifying this option availability).

### Notes:

- Drawer(s) below full cabinet floor.
- Adjustable shelf is included.
- Available with the **All Plywood Construction Option (APC)**, Plywood Veneered Sides Option (PVS) or Reduced Depth Cabinet Option (RD).
- Available with CushionClose Glide Option (Portfolio Select door styles only) or optional Dovetail Full Access Drawer Option (Portfolio door styles only).



## Reduced Depth Cabinet Option

● RD

The Reduced Depth Cabinet Option should be used when ordering less than standard depth cabinets. Reduced Depth cabinets are available in 1" reductions; minimum cabinet depth is 4".

Orders specifying Reduced Depth Option must show the total cabinet depth.

Example: Cabinet: B24

Option: RD-17 (RD – Reduce to 17" Deep)

### Notes:

- There is a potential tipping hazard for Reduced Depth Cabinets until they are mounted to a wall.
- Peninsula Base Cabinets reduced to 11" or less will NOT have an inset toe kick.
- Universal Design Cabinets reduced to 9" or less will NOT have an inset toe kick.
- Straight Appliance Garage – reduced depth minimum is 5".
- Base End Angle (BEA12 or BEA12FH) – reduced depth minimum is 18".
- When ordering Reduced Depth accessories, specify the depth of the cabinet in which the accessory is intended, (e.g., SK3624-RD21 deep fits in a UT3624x84-RD21 deep).

Reduced Depth	Drawer Depth Base Cabinets & 24" Deep Desk Portfolio Select and Portfolio with Dovetail Full Access Drawer Option	Drawer Depth Portfolio and Value-Built Base Cabinets Portfolio Select, Portfolio and Value-Built Vanity Base & 21" Deep Desk Cabinets	Sliding Shelf Depth	Deep Dovetail Sliding Shelf Depth	Inset Toe Kick	Shelf
23	18"	18"	18"	18"	Yes	Yes
22	18"	18"	18"	18"	Yes	Yes
21	18"	18"	16"	18"	Yes	Yes
20	15"	14"	16"	14"	Yes	Yes
19	15"	14"	16"	14"	Yes	Yes
18	15"	14"	15"	14"	Yes	Yes
17	12"	14"	14"	14"	Yes	Yes
16	12"	9"	13"	9"	Yes	Yes
15	12"	9"	12"	9"	Yes	Yes
14	9"	9"	11"	9"	Yes	Yes
13	9"	9"	10"	9"	Yes	Yes
12	9"	9"	9"	9"	Yes	Yes
11–6	No Drawer	No Drawer	No Sliding Shelf	No Sliding Shelf	Yes	Yes
5–4	No Drawer	No Drawer	No Sliding Shelf	No Sliding Shelf	No Toe Kick	Yes

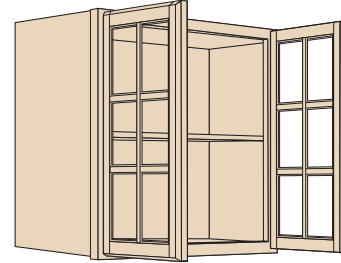
## Matching Interior Cabinet Option

● MI

The Matching Interior Cabinet Option is available on all Wall cabinets with exceptions as noted below. This option matches the cabinet's interior sides to those of the cabinet's exterior sides.

### Notes:

- Available for Wall cabinets with the **All Plywood Construction Option (APC)**, Plywood Veneered Sides Option (PVS), Reduced Depth Cabinet Option (RD), Increased Depth Cabinet Option (ID), Void Door Cabinet Option (VDO) or standard construction.
- Recommended for Mullion Frame Door Wall cabinets, Open Frame Door Wall cabinets or Wall cabinets with the Void Door Cabinet Option (VDO).
- NOT available for Appliance Garages or any Wall cabinet with a standard matching interior.
- All finished surfaces of the wall cabinet will be color matched including shelves, back, interior and exterior of returns, top and bottom, corner wall back post and back side of Peninsula Wall face frames.
- Maple Natural and White Thermo Foil door styles feature Matching Interior standard. All other door styles must order the Matching Interior Cabinet Option separately, including **Maple Linen**.



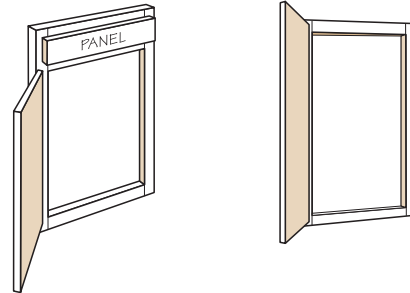
## Cabinet Front Only Option

● CFO

The Cabinet Front Only Option is available for most cabinets with a frame.

### Notes:

- This option consists of the cabinet frame, door(s), drawer front(s), battens, and hinges.
- Toe kicks are not included.

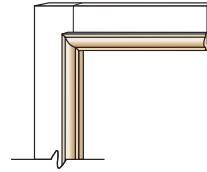


## Void Door Cabinet Option

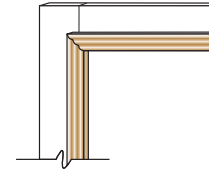
VDO

The **Void Door Cabinet Option** is available for most wall cabinets. All void door cabinets ship without doors, battens or hinges – center stiles remain. Refer to the descriptions below to select the correct option for your layout:

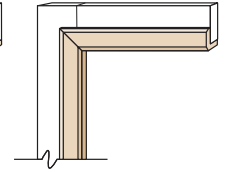
- **VDO-DFH** (Drilled For Hinges)
  - Use this option when doors will be ordered separately in a complementing finish color.
  - **Cabinet stiles are pre-drilled for door hinges.**
- **VDO-SBAM** (Single Bead Accent Molding)  
**VDO-TBAM** (Triple Bead Accent Molding)  
**VDO-SAM** (Shaker Accent Molding)
  - Use these options to create decorative open cabinets.
  - **Cabinet stiles are pre-drilled for door hinges—** Decorative Accent Moldings will conceal hinge holes.
  - **Molding is to be cut and field installed at the job site.**
  - Maple Natural and White Thermo Foil door styles feature Matching Interior standard. All other door styles must order the Matching Interior Cabinet Option separately, including **Maple Linen.**



**VDO-SBAM**  
Single Bead Accent Molding



**VDO-TBAM**  
Triple Bead Accent Molding



**VDO-SAM**  
Shaker Accent Molding

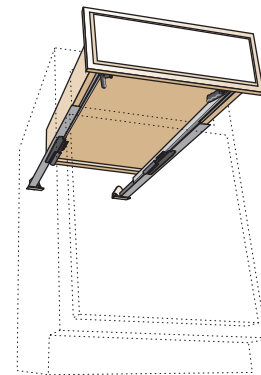
## CushionClose Glide Option

The CushionClose Glide Option provides all of the features and benefits of the standard Full Access Hidden Glides System with the addition of an integrated slow-close mechanism that reduces slamming and noise.

- Slow closing system helps reduce slams and noise.
- Unique air damper technology for whisper-quiet operation.
- All the features of the Full Access Hidden Glides System (Refer to page 38).
- Decorative hardware strongly recommended.

**Notes:**

- Available for Portfolio Select door styles only.
- Available with Reduced Depth Cabinet Option  RD.
- Available with Inverted Frame Option  IF.
- **Not available for Vanity or 21" deep Desk cabinetry.**



## Dovetail Full Access Drawer Option

Dovetail Full Access Drawers are standard in Timberlake Portfolio Select and are available as an optional upgrade in Timberlake Portfolio door styles. This option is not available in Value-Built by Timberlake door styles.

**Vanity and 21" deep Desk cabinets ordered with this option will feature dovetail drawers with Side-Mounted Drawer Glides, which are not full access.**

